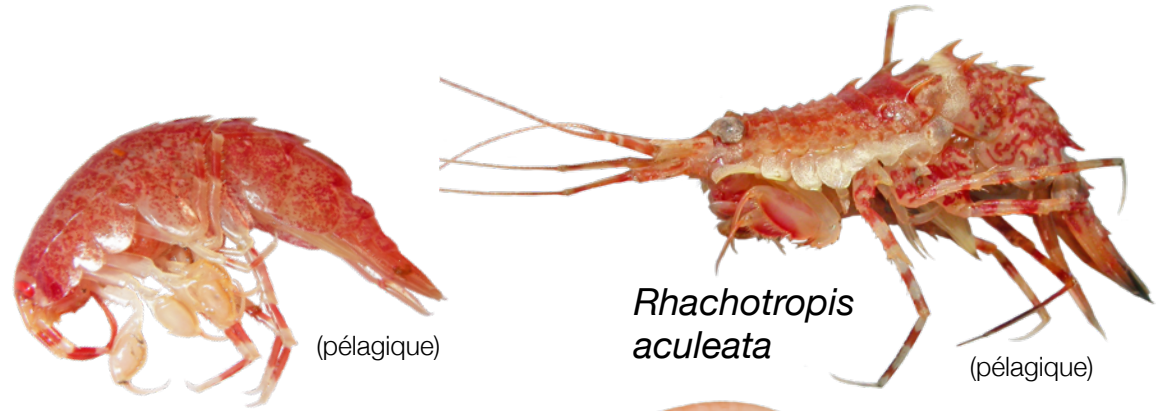


**AMPHIPODA**



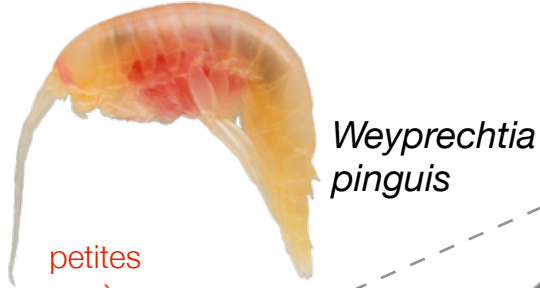
*Eusirus cuspidatus*

(pélagique)

*Rhachotropis aculeata*

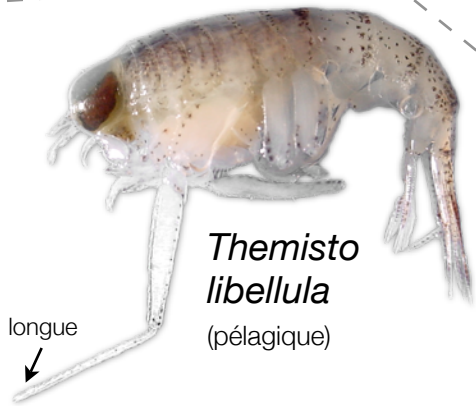
(pélagique)

dos lisse =  
*Themisto abyssorum*  
épines dorsales =  
*Themisto compressa*



*Weyprechtia pinguis*

petites espèces



*Themisto libellula*

grandes espèces

longue



*Anonyx sp.*



*Stegocephalus inflatus*



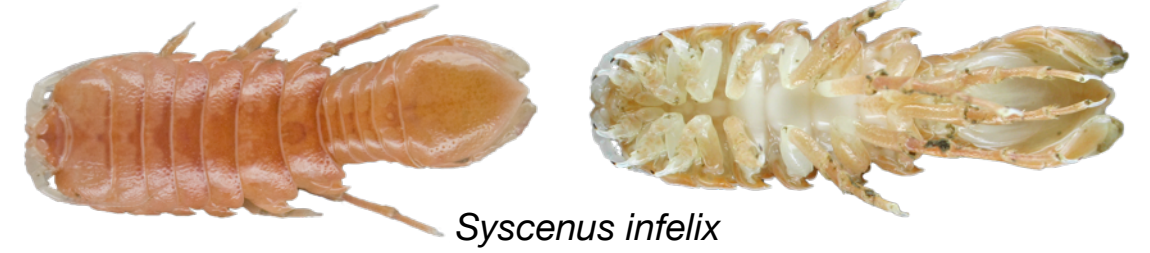
*Gammarus sp.*



*Neohela monstrosa*  
(fouisseuse)

CRUSTACEA  
AMPHIPODA  
ISOPODA  
CIRRIPEDIA  
de l'estuaire et du nord du golfe du Saint-Laurent

**ISOPODA**

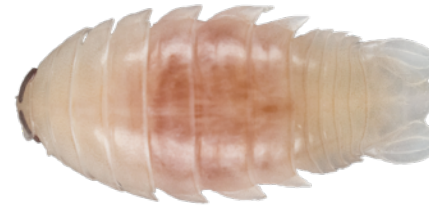


*Syscenus infelix*



*Aega psora*

parasites



**Anthuridae**

*Calathura brachiata*

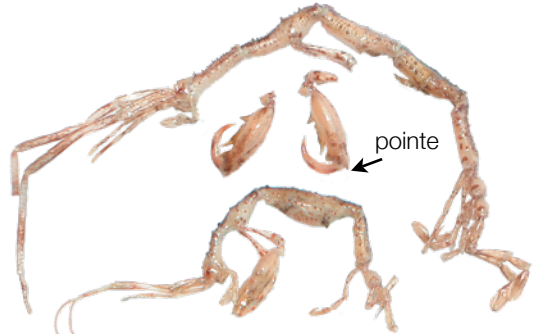
espèces cotières



**Idoteidae**

*Idotea sp.*

**Caprellidae**



*Aeginina longicornis*

pointe



*Caprella sp.*



*Paramphithoe hystrix*

sur des éponges



*Epimeria loricata*

**CIRRIPEDIA**



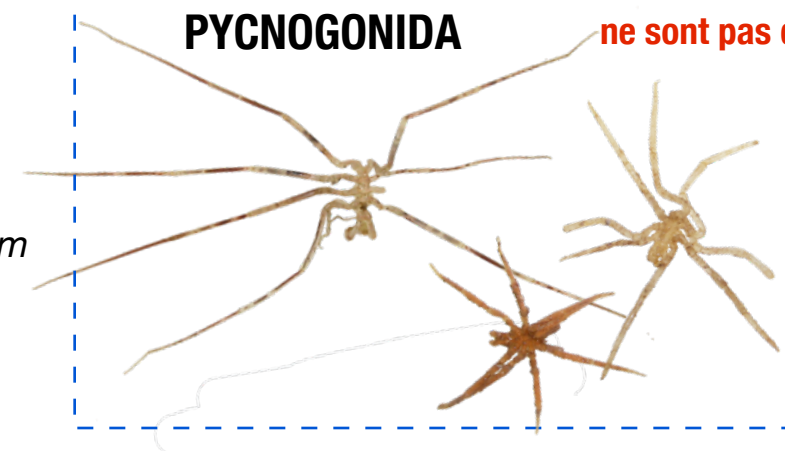
*Chirona hameri*



*Arcoscalpellum sp.*

**PYCNOGONIDA**

ne sont pas des crustacés



*Pycnogonum littorale*