

See discussions, stats, and author profiles for this publication at: <https://www.researchgate.net/publication/328080506>

Woodlice and their parasitoid flies: Revision of Isopoda (Crustacea, Oniscidea) – Rhinophoridae (Insecta, Diptera) interaction and first record of a parasitized Neotropical woodlouse...

Article in *ZooKeys* · November 2018

DOI: 10.3897/zookeys.801.26052

CITATIONS

2

READS

984

3 authors:



Camila Timm Wood

12 PUBLICATIONS 63 CITATIONS

[SEE PROFILE](#)



Silvio Nihei

University of São Paulo

120 PUBLICATIONS 1,048 CITATIONS

[SEE PROFILE](#)



Paula Beatriz Araujo

Universidade Federal do Rio Grande do Sul

169 PUBLICATIONS 1,763 CITATIONS

[SEE PROFILE](#)

Some of the authors of this publication are also working on these related projects:



Taxonomic revision and phylogenetic analysis of the Telothyriini tribe (Diptera, Tachinidae). [View project](#)



Taxonomia e Biogeografia dos ermitões (Decapoda: Anomura: Paguroidea) da Região Sul do Brasil e áreas adjacentes [View project](#)

Woodlice and their parasitoid flies: revision of Isopoda (Crustacea, Oniscidea) – Rhinophoridae (Insecta, Diptera) interaction and first record of a parasitized Neotropical woodlouse species

Camila T. Wood¹, Silvio S. Nihei², Paula B. Araujo¹

1 Federal University of Rio Grande do Sul, Zoology Department. Av. Bento Gonçalves, 9500, Prédio 43435, 91501-970, Porto Alegre, RS, Brazil **2** University of São Paulo, Institute of Biosciences, Department of Zoology. Rua do Matão, Travessa 14, n. 101, 05508-090, São Paulo, SP, Brazil

Corresponding author: Camila T Wood (ctwood86@gmail.com)

Academic editor: E. Hornung | Received 11 May 2018 | Accepted 26 July 2018 | Published 3 December 2018

<http://zoobank.org/84006EA9-20C7-4F75-B742-2976C121DAA1>

Citation: Wood CT, Nihei SS, Araujo PB (2018) Woodlice and their parasitoid flies: revision of Isopoda (Crustacea, Oniscidea) – Rhinophoridae (Insecta, Diptera) interaction and first record of a parasitized Neotropical woodlouse species. In: Hornung E, Taiti S, Szlavetz K (Eds) Isopods in a Changing World. ZooKeys 801: 401–414. <https://doi.org/10.3897/zookeys.801.26052>

Abstract

Terrestrial isopods are soil macroarthropods that have few known parasites and parasitoids. All known parasitoids are from the family Rhinophoridae (Insecta: Diptera). The present article reviews the known biology of Rhinophoridae flies and presents the first record of Rhinophoridae larvae on a Neotropical woodlouse species. We also compile and update all published interaction records. The Neotropical woodlouse *Balloniscus glaber* was parasitized by two different larval morphotypes of Rhinophoridae. Including this new record, there are 18 Isopoda species known to be parasitized and 13 Rhinophoridae species with known hosts, resulting in 35 interactions. There are a total of 53 interaction records from Holarctic and Neotropical countries. Of the 18 known isopod hosts, only five species have more than one parasitoid, including the new Neotropical host record presented in this work.

Keywords

Diptera, Isopoda, Oniscidea, parasitoids, Rhinophoridae

Introduction

Terrestrial isopods are soil macroarthropods involved in decomposition processes and nutrient cycling (Zimmer 2002). This group has many predators within the soil but few known parasites and parasitoids. Among parasitoids, all known species belong to the family Rhinophoridae (Insecta: Diptera) (Sutton 1980). This family of flies comprises about 150 species worldwide that mainly parasitize woodlice (Pape and Arnaud 2001, Nihei 2016). Despite their numbers, not many papers discuss the woodlouse-parasitoid interaction. Studies regarding the interaction and fly's larval stages are scarce and difficult to find and the taxonomy and phylogeny of both groups have been considerably modified since those studies were published. Hence, there is no current list of recorded interactions and a need to update them taxonomically. Information from immature stages and their biology is crucial for evaluating the systematic position of many aberrant oestroid flies such as the rhinophorids (Pape and Arnaud 2001), so knowledge of the morphology of larval stages may help phylogenetic analysis and classification (Cerretti et al. 2014), as well as to understand its evolutionary history in association with the woodlice hosts. Therefore, this work aims to (1) review the known biology of Rhinophoridae larvae focusing on the woodlouse-larva interaction, (2) present the first record of Rhinophoridae larvae on a Neotropical woodlouse species and (3) update the recorded interactions according to current taxonomy of both groups.

Material and methods

Bibliographic searches in the platforms Web of Science, Science Direct, Biodiversity Heritage Library and Google Scholar were performed using the following keywords: Rhinophoridae, woodlouse flies, Tachinidae, Rhinophorinae. All the subsequent references from obtained papers were searched in available databases and scientific libraries.

Regarding the new woodlouse host record, infected individuals of *Balloniscus glaber* Araujo & Zardo, 1995 that had been collected in Morro Santana, Porto Alegre, Southern Brazil (30°4'4"S, 51°7'22"W) were discovered from laboratory culture. The location is at 100 m of elevation and the vegetation consists of a mosaic of Atlantic forest and grassland (Overbeck et al. 2006). Hosts were carefully dissected, photographed, and preserved in ethanol 70 %. Larvae were heated in water at 60 °C before being transferred to ethanol whenever possible. The material used in this study is deposited in Museu de Zoologia, Universidade de São Paulo, São Paulo, Brazil (MZUSP).

Taxonomy of isopod species was updated according to Schmalfuss (2003) and recent revisions. Taxonomy and name validity of Rhinophoridae species were based on regional catalogues and recent generic revisions, when available (Herting 1993, Cerretti and Pape 2007, 2009).

Results and discussion

Biology of larval stages: Isopoda-Rhinophoridae interaction

Very few studies regard the biology of the larva and its effect on the woodlouse host. These studies usually demand a long period of time due to the difficulty of obtaining the parasitoids (Thompson 1934, Bedding 1965, 1973). This difficulty is partially explained by the low prevalence of this parasitoid on natural populations and for the apparent specificity of host species (Bedding 1965). Prevalence on natural populations is usually lower than 2% and seems to be associated with the infection method.

Adult Rhinophoridae flies copulate and the female deposits the eggs on substrates (Bedding 1965, Wijnoven 2001) contaminated by uropod gland secretion of isopods rather than on the host itself (Bedding 1965) which may be a derived character in this group of parasitoids (Wood 1987). This secretion is not commonly observed in all woodlice species but it is rather easily obtained from *Porcellio scaber* Latreille, 1804 (Gorvett 1946, Deslippe et al. 1996) which might explain why this species has the highest number of known parasitoids and highest prevalence on natural populations (Bedding 1965, Sassaman and Pratt 1992).

The eggs deposited on the soil hatch and the 1st instar larva attaches itself to the body of a passing woodlouse. The larva may wave its anterior end slowly forward and sideward in an attempt to attach itself to the body of a passing woodlouse (Pape and Arnaud 2001). This method of infection is affected by host size since the larva cannot reach the sternites of bigger (taller) animals. It was also observed the suitability of the host relates to a specific period of the molting cycle of the isopod. Differently from insects, crustaceans present a highly calcified cuticle (Roer et al. 2015). Within crustaceans, isopods have developed specific strategies to recycle calcium from the old cuticle such as a biphasic molting (they first molt the posterior half and then the anterior half of the body) and accumulation of amorphous calcium carbonate in the anterior sternites prior ecdysis (Greenaway 1985, Steel 1993, Ziegler 1994). The fly larva attaches itself to isopods with calcium plates (i.e., during premolt or intramolt) and penetrates through the intersegmental membrane of the sternites of the freshly molted host (Bedding 1965), since they present a softer cuticle at this stage. Nonetheless, there is a high rate of cannibalism of freshly molted isopods (Bedding 1965) thus reducing the chances of survival of the fly larva inside the host and possibly explaining the low prevalence among natural populations.

After the larva has entered the host, it then molts to its 2nd instar and starts feeding, first on the hemolymph, and then on the organs of the host. The 3rd instar larva fills most of the body cavity leading to isopod death. Pupation occurs inside the empty exoskeleton of the host (Thompson 1934, Bedding 1965) (Figure 1).

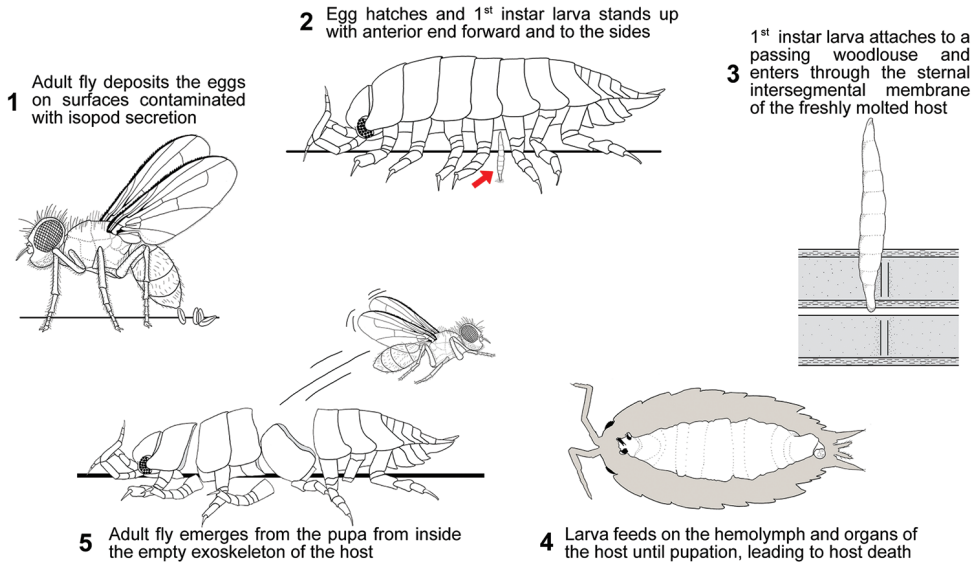


Figure 1. Schematic representation of the infection cycle of a Rhinophoridae fly in a woodlouse host. 3 is modified from Thompson (1934).

First Neotropical woodlouse host record

Almost all records from Rhinophoridae hosts are from the Palearctic region. Outside the Palearctic, there is only mention of *Porcellio scaber*, *Oniscus asellus* Linnaeus, 1758 and *Porcellionides pruinosus* (Brandt, 1833) in the Nearctic (Brues 1903, Jones 1948, Sassaman and Garthwaite 1984, Sassaman and Pratt 1992) and *Armadillidium* sp. (probably *Armadillidium vulgare* (Latreille, 1804)) in the Neotropic (Parker 1953). All of these woodlice species were parasitized by *Melanophora roralis* (Linnaeus, 1758). Nonetheless, all the aforementioned oniscidean and rhinophorid species are introduced from the Palearctic on these locations. Some authors hypothesize that transportation of infected woodlice can explain the occurrence of Palearctic Rhinophoridae in the Nearctic and Neotropic (Mulieri et al. 2010, O'Hara et al. 2015) provided that introduced woodlice are common in these regions (Jass and Klausmeier 2000). The lack of native woodlouse hosts in the Nearctic region is thought to be associated with the low diversity of native woodlice species there (*c.f.* Schmalfuss 2003), but the same is not true for the Neotropic. In fact, in Brazil alone there is circa 200 described species, most of them native (Cardoso et al. 2018).

In the Neotropic, 19 native species of Rhinophoridae have been described (Cerretti et al. 2014, Nihei et al. 2016), but there is no information regarding parasitoid-host interaction so far. Of these, only the 1st instar larva of *Bezzimyia yepesi* Pape & Arnaud, 2001 (Venezuela) is known (Pape and Arnaud 2001) and no host record has been made before, even for the two introduced species, *Melanophora roralis* (L.) and *Stevenia deceptoria* (Loew, 1847) (Mulieri et al. 2010) (Figure 2).



Figure 2. Distribution map of native and introduced Rhinophoridae species in the Neotropical region (area in gray) including the new larvae record. *Apomorphyto inbio* records from Pape (2010) and Cerretti et al. (2014); *Bezzimyia* spp. records from Pape and Arnaud (2001); *Shannoniella* spp. records from Nihei et al. (2016); *Trypetidomima* spp. records from Nihei and Andrade (2014); *Melanophora roralis* records from Parker (1953), Guimarães (1977), González (1998), Cerretti and Pape (2009) and Mulieri et al. (2010); *Stevenia deceptoria* records from Mulieri et al. (2010). Base map modified from: commons.wikimedia.org/

Here we observed that the Neotropical isopod *Balloniscus glaber* is a host for the dipterous larvae in southern Brazil (Figure 2), and the two observed 3rd instar larvae morphotypes are different from the nine Palearctic species with previously described 3rd instar larval forms (Thompson 1934, Bedding 1965), including the introduced *Melanophora roralis*.

Balloniscus glaber shares many characteristics with clingers (Wood et al. 2017) although it does not present a typical clinger eco-morphological body type like *Porcellio scaber* (*sensu* Schmalfuss 1984). However, it presents clinging behavior (Figure 3A) for predator avoidance (Quadros et al. 2012, Wood et al. 2017) and its legs are shorter than in runner type animals of similar size. These morphological and behavioral characteristics might facilitate larva infection due to reduced distance of sternites to the substrate. Furthermore, like *Porcellio scaber*, this species also frequently discharges a sticky secretion from their uropod glands upon stimulation (Figure 3B), secretion that is recognized by adult fly females and might stimulate oviposition (Bedding 1965). Five infected individuals have been recorded in the same location (Figure 3C–F). The larvae (one per host) occupied the full body cavity, reaching up to 7 mm in length and resulted in death of all woodlice hosts (Suppl. material 2). Hosts lacked discernible internal reproductive system and the empty gut was the only remaining organ (Figure 3E). No host presented any signs of alteration in overall appearance. The parasitoids could only be identified at the family level due to the lack of larval descriptions for the native species and lack of adults to get a more precise identification. The larvae were identified as Rhinophoridae based on comparative examination of descriptions and illustrations available on the literature; both collected morphotypes presented elongate body shape, anterior and posterior spiracles, and cephaloskeleton as characterized by rhinophorid species. The two 3rd instar larvae morphotypes are conspicuously different on body shapes, posterior ends, cephaloskeleton, and anterior and posterior spiracles (Figs 4, 5). These forms differ from the known larval stages described by Thompson (1934) and Bedding (1965, 1973). Given the apparent specificity of host records (see next topic) we believe they are Neotropical species (and none of the introduced species). They may be larvae of the described Neotropical species of *Shannoniella* Townsend, 1939 or *Trypetidomima* Townsend, 1935, or they may even belong to undescribed species, since the distribution of *Balloniscus glaber* (Lopes et al. 2005) does not extend to the locations where these native Rhinophoridae have been found, namely, the southeastern portion of Brazilian Atlantic Forest (Nihei and Andrade 2014, Nihei et al. 2016). Furthermore, the location of the new Rhinophoridae record is at a low altitude and Neotropical woodlouse flies seem to be rare in the lowlands, being usually found at elevations of 600–1200 meters in Brazil (Nihei and Andrade 2014, Nihei et al. 2016). Nonetheless, *Balloniscus glaber* can be found in altitudes up to 1000 meters in southern latitudes (Lopes et al. 2005) while another species from the genus, *Balloniscus sellowii* (Brandt, 1833), presents a broader latitudinal distribution (Schmalfuss 2003).

A further publication will describe in detail the morphology of the two 3rd instar morphotypes, and DNA sequencing will be performed trying to obtain a more precise identification.

Reviewed interactions records following current taxonomy

The earliest reference to a Rhinophoridae parasitoid of woodlice appears to be from von Roser (1840 *apud* Thompson 1934) that created some confusion in the literature in

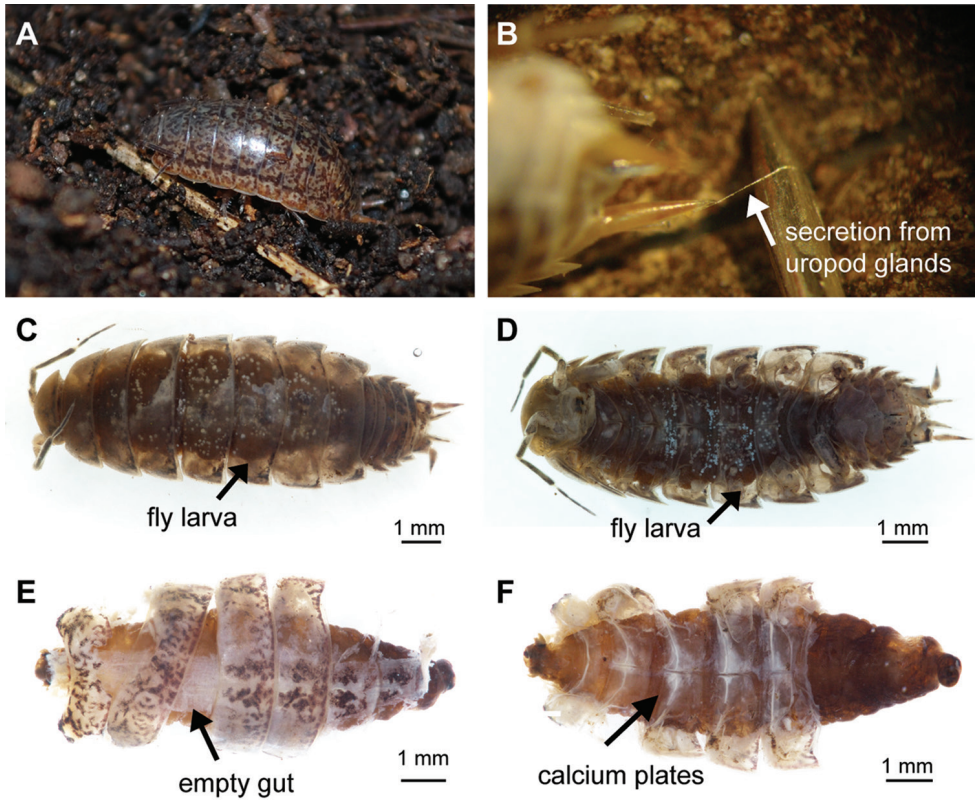


Figure 3. *Balloniscus glaber* infected with 3rd instar Rhinophoridae larva **A** alive **B** *B. glaber* clinging to the substrate **B** secretion discharged from uropod glands **C–D** dorsal (**C**) and ventral (**D**) views of *Balloniscus glaber* with a third instar Rhinophoridae larva inside **E–F** partially dissected *Balloniscus glaber* infected with Rhinophoridae larva showing the empty gut on dorsal view (**E**) and the calcium plates on ventral view (**F**).

later years. In his paper, the dipteran “*Tachinia atramentaria*” (currently *Stevenia atramentaria* (Meigen, 1824)) is mentioned as a parasite of a woodlouse, possibly *Oniscus asellus*. Thompson (1934), Herting (1961), Bedding (1965) and Verves and Khrokalo (2010) mentioned that *Oniscus asellus* was probably a wrong identification while Cerretti and Pape (2007) mention *Oniscus asellus* as a possible host for *Stevenia atramentaria*. The doubtful record was finally resolved in Kugler (1978) where the author states the record was based on a misidentification of *Trachelipus rathkii* (Brandt, 1833) according to a personal communication from Herting, that apparently had already been corrected in Sutton’s book (1980). Rognes (1986) and Dubiel and Bystrowski (2016) still list *Oniscus asellus* as a host or possible host of *Stevenia atramentaria* but referencing articles that mention the species as a possible host, probably following von Roser’s reference from 1840. Therefore, we could not find any reliable record of *Oniscus asellus* as a host of *Stevenia atramentaria*. Dubiel and Bystrowski (2016) list *Trachelipus rathkii* as a host from *Stevenia atramentaria* for the first time, but it should be the third record

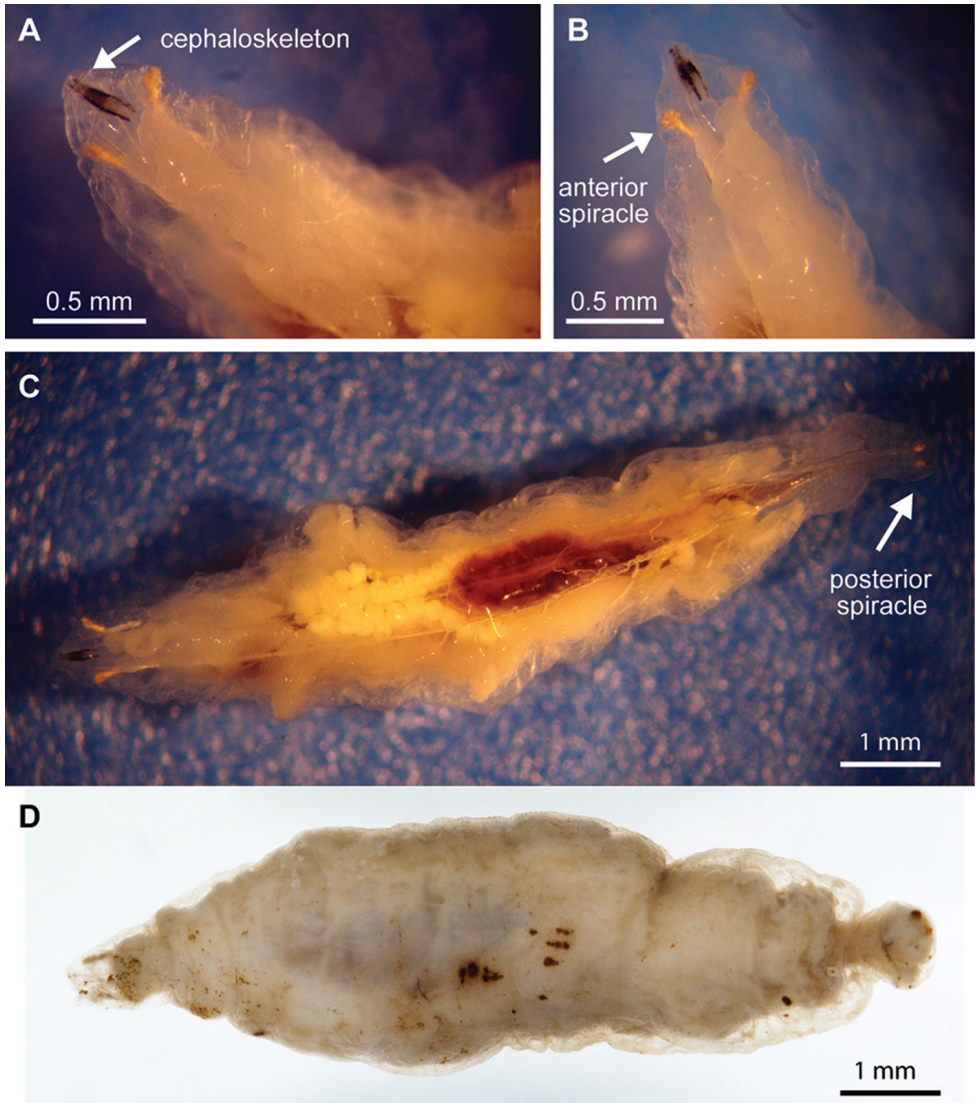


Figure 4. Rhinophoridae larva obtained from the Neotropical isopod *Balloniscus glaber*. Morphotype 1, 3rd instar **A** detail view of the cephaloskeleton on dorsal view **B** detail view of the anterior spiracle **C** alive larva with transparent integument **D** fixed larva, dorsal view.

of this interaction if the identification correction from von Roser's article is taken into account as well as the thesis from Bedding (1965).

The following record on the literature is from Brues (1903) indicating *Melanophora roralis* as a parasitoid of *Porcellio* sp., probably *Porcellio scaber* in Massachusetts, USA. Besides *Porcellio scaber* as a host, this dipteran species was also recorded as a parasitoid of *Oniscus asellus* (Jones 1948, Sassaman and Garthwaite 1984, Sassaman and Pratt 1992) and *Porcellionides pruinosus* (Sassaman and Garthwaite 1984) in the

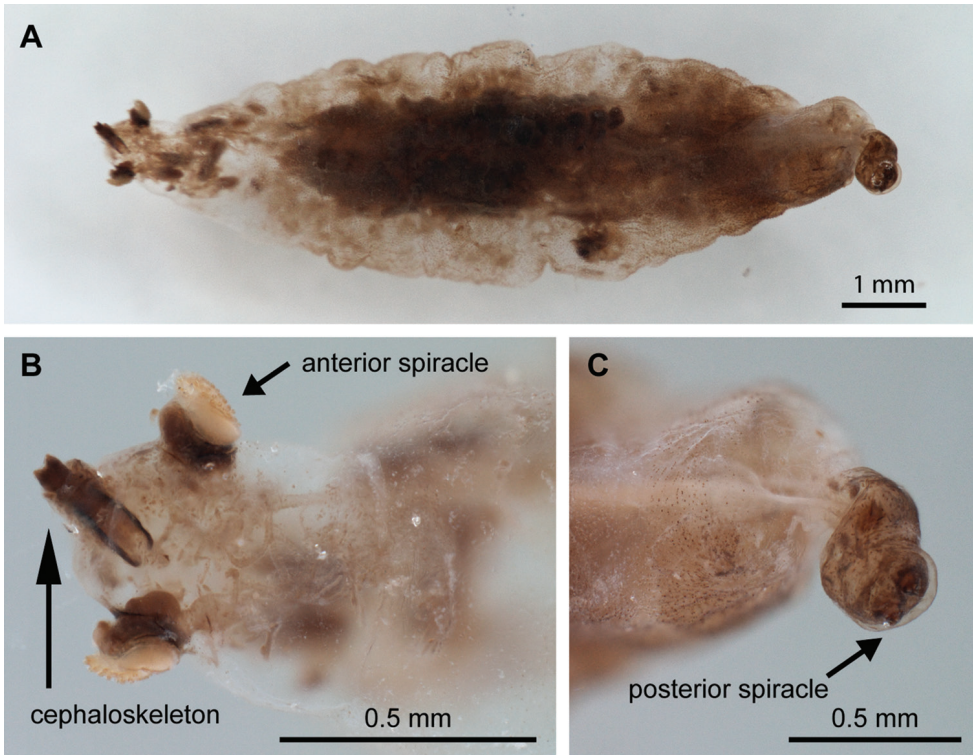


Figure 5. Rhinophoridae larva obtained from the Neotropical isopod *Balloniscus glaber*. Morphotype 2, 3rd instar **A** dorsal view **B** detail from anterior part showing the cephaloskeleton and anterior spiracles **C** detail of the posterior spiracle.

United States. In the Palearctic region, besides the aforementioned isopods, *Porcellio spinicornis* Say, 1818 (Irwin 1983) is also listed as host for *Melanophora roralis*. This species of fly shows the highest plasticity of hosts as well as largest geographical distribution that is not restricted to the Palearctic region. It is found in the U.S.A. (Brues 1903, Jones 1948, Sassaman and Garthwaite 1984, Cerretti and Pape 2009), Chile (González 1998), Argentina, Brazil and Jamaica (Guimarães 1977, Mulieri et al. 2010).

Records of interactions are available in von Roser (1840 *apud* Thompson 1934), Brues (1903), Thompson (1934), Jones (1948), Parker (1953) Herting (1961) Bedding (1965), Kugler (1978), Irwin (1983), Sassaman and Garthwaite (1984), Nash (1985), Bürgis (1991, 1992), Cordaux et al. (2001), Wijnhoven (2001), Cerretti et al. (2014) and Dubiel and Bystrowski (2016) although most of this literature is not taxonomically updated. Other works like Arnaud (1978), Draber-Monko (1981), Rognes (1986), Wijnhoven and Zeegers (1999), Cerretti and Pape (2007), and Ziegler (2008) report known hosts from the literature (some of them with current species' names), but don't present new records. Therefore, the number of interactions is certainly higher than it has been recorded so far. Currently, there are 18 Isopoda species known to be parasitized (one with an undetermined Rhinophoridae species), and 13 Rhinophoridae species with known

Table 1. Records of Isopoda-Rhinophoridae (host-parasitoid) interactions from the literature with updated taxonomy. The records from Bedding 1965 are also presented in Sutton (1980). Supplementary dataset presents, additionally, the name of the species of both Rhinophoridae and Isopoda in the original record publication, country, and biogeographical region Suppl. material 1.

Isopod species	Rhinophoridae species	Source
Family Armadillidae		
<i>Armadillidium frontirostre</i>	<i>Stevenia signata</i>	Bürgis 1992
<i>Armadillidium nasatum</i>	<i>Phyto melanocephala</i>	Herting 1961 (after Legrand)
	Rhinophoridae sp.	Cordaux et al. 2001
<i>Armadillidium silvestrii</i>	<i>Phyto melanocephala</i>	Herting 1961 (Verhoeff after Séguéy 1941)
<i>Armadillidium versicolor</i>	<i>Phyto melanocephala</i>	Herting 1961 (Verhoeff after Séguéy 1941)
<i>Armadillidium vulgare</i>	<i>Phyto melanocephala</i>	Thompson 1934 (found by Donisthorpe); Bedding 1965
	<i>Stevenia signata</i>	Bürgis 1991, 1992
<i>Armadillidium</i> sp. (probably <i>A. vulgare</i>)	<i>Melanophora roralis</i>	Parker 1953
<i>Armadillo officinalis</i>	<i>Phyto armadillonis</i>	Kugler 1978
Family Balloniscidae		
<i>Balloniscus glaber</i>	Rhinophoridae sp.	Wood et al. 2018 (present study)
Family Cylisticidae		
<i>Cylisticus convexus</i>	<i>Rhinomorinia sarcophagina</i>	Dubiel and Bystrowski 2016
Family Oniscidae		
<i>Oniscus asellus</i>	<i>Melanophora roralis</i>	Jones 1948
	<i>Paykullia maculata</i>	Thompson 1934, Bedding 1965
	<i>Phyto discrepans</i>	Thompson 1934, Bedding 1965
	<i>Phyto melanocephala</i>	Thompson 1934 (found by Donisthorpe)
Family Philosciidae		
<i>Philoscia affinis</i>	<i>Stevenia atramentaria</i>	Herting 1961 (Verhoeff after Séguéy 1941)
Family Porcellionidae		
<i>Porcellio laevis</i>	<i>Phyto luteisquama</i>	Kugler 1978
<i>Porcellio scaber</i>	<i>Melanophora roralis</i>	Thompson 1934, Jones 1948, Bedding 1965, Sassaman and Garthwaite 1984
	<i>Paykullia maculata</i>	Thompson 1934, Bedding 1965
	<i>Phyto discrepans</i>	Thompson 1934, Bedding 1965
	<i>Phyto melanocephala</i>	Thompson 1934, Bedding 1965
	<i>Rhinophora lepida</i>	Thompson 1934, Bedding 1965
	<i>Stevenia atramentaria</i>	Thompson 1934
	<i>Tricogena rubricosa</i>	Thompson 1934, Bedding 1965, Nash 1985, Dubiel and Bystrowski 2016
<i>Porcellio</i> sp. (probably <i>Porcellio scaber</i>)	<i>Stevenia</i> sp.	Cordaux et al. 2001
	<i>Melanophora roralis</i>	Brues 1903
<i>Porcellio spinicornis</i>	<i>Stevenia deceptoria</i>	Cerretti et al. 2014
	<i>Melanophora roralis</i>	Irwin 1983
<i>Porcellionides pruinosus</i>	<i>Phyto melanocephala</i>	Herting 1961 (Legrand after Seguy 1941)
	<i>Melanophora roralis</i>	Sassaman and Garthwaite 1984
<i>Protracheoniscus politus</i>	<i>Phyto angustifrons</i>	Thompson 1934
	<i>Paykullia maculata</i>	Herting 1961 (Verhoeff after Séguéy 1941)
Family Trachelopodidae		
<i>Trachelipus arcuatus</i>	<i>Stevenia atramentaria</i>	Herting 1961 (Verhoeff after Séguéy 1941)
	<i>Paykullia maculata</i>	Wijnhoven 2001
<i>Trachelipus rathkii</i>	<i>Stevenia atramentaria</i>	von Roser 1840 (corrected in Kugler 1978 by Herting as personal communication), Bedding 1965, Dubiel and Bystrowski 2016
	<i>Tricogena rubricosa</i>	Dubiel and Bystrowski 2016
<i>Trachelipus ratzeburgii</i>	<i>Paykullia maculata</i>	Herting 1961

hosts, resulting in 35 known interactions (and two others lacking host species identification) and a total of 53 records from 12 countries. Out of the 18 known isopod hosts, only five species have more than one parasitoid: *Porcellio scaber* (seven or eight rhinophorid species), *Oniscus asellus* (four spp.), *Trachelipus rathkii* (three spp.), *Armadillidium vulgare* (two or three spp.), *Porcellio spinicornis* and *Porcellionides pruinosus* (two spp.), and *Balloniscus glaber* (with two undetermined morphotypes recorded here) (Table 1).

Acknowledgments

We wish to thank Matty Berg, Erzsébet Hornung, and especially Helmut Schmalzfuss for access to valuable bibliography, Joanna Paruszczyńska for help with Polish language literature, Augusto F. Huber with assistance with the drawings, and the two reviewers who provided suggestions that improved this manuscript. CTW thanks Capes (1564451) and Propesq/UFRGS for financial support, SSN thanks FAPESP (2015/10788-0) and CNPq (403165/2016-4, 303615/2015-2), and PBA thanks CNPq (305900/2014-5). Animal collection is in compliance with Brazilian federal laws (license # 43200 and 14BR015851/DF from IBAMA).

References

- Arnaud PH (1978) A Host-Parasite Catalog of North American Tachnidae (Diptera). Miscellaneous Publication No. 1319. U.S. Department of Agriculture, Science and Education Administration, Washington DC, 860 pp.
- Bedding RA (1965) Parasitism of British Terrestrial Isopoda by Diptera. PhD Thesis, Imperial College of London, London, 234 pp.
- Bedding RA (1973) The immature stages of Rhinophorinae (Diptera: Calliphoridae) that parasitise British woodlice. Transactions of the Royal Entomological Society of London 125: 27–44. <https://doi.org/10.1111/j.1365-2311.1973.tb00536.x>
- Brues CT (1903) A Dextid Parasite of the Sow-Bug. Entomological News 14: 291.
- Bürgis H (1991) Parasitische Hautflügler aus Puparien der in Asseln schmarotzenden Asselfliegen. Teil 1: Eine neue Wespe. Mikrokosmos 80: 295–299.
- Bürgis H (1992) Parasitische Hautflügler aus Puparien der in Asseln schmarotzenden Asselfliegen. Teil 4: Die Asselfliege, Schlussbemerkungen. Mikrokosmos 81: 100–104.
- Cardoso GM, Campos-Filho IS, Araujo PB (2018) Taxonomic revision of *Brasiloniscus* (Oniscidea, Pudeoniscidae) with description of a new species. European Journal of Taxonomy: 1–15. <https://doi.org/10.5852/ejt.2018.434>
- Cerretti P, Logiudice G, Pape T (2014) Remarkable Rhinophoridae in a growing generic genealogy (Diptera: Calyptratae, Oestroidea). Systematic Entomology 39: 660–690. <https://doi.org/10.1111/syen.12080>
- Cerretti P, Pape T (2007) Two new species of European *Stevenia* Robineau-Desvoidy (Diptera: Rhinophoridae) and a key to the Palaearctic species. Zootaxa 41: 31–41.

- Cerretti P, Pape T (2009) Phylogeny and re-definition of the genus *Melanophora* (Diptera: Rhinophoridae), with description of a new species from Sardinia. *Zootaxa* 2318: 552–565.
- Cordaux R, Michel-Salzat A, Bouchon D (2001) *Wolbachia* infection in crustaceans: Novel hosts and potential routes for horizontal transmission. *Journal of Evolutionary Biology* 14: 237–243. <https://doi.org/10.1046/j.1420-9101.2001.00279.x>
- Deslippe RJ, Jelinski L, Eisner T (1996) Defense by use of a proteinaceous glue: woodlice vs. ants. *Zoology* 99: 205–210.
- Draber-Monko A (1981) Sarcophagidae and Rhinophoridae (Diptera) of Warsaw and Mazovia. *Memorabilia Zoologica* 35: 131–140.
- Dubiel G, Bystrowski C (2016) Notes of woodlouse flies (Diptera: Rhinophoridae) and their hosts in the Beskid Śląski (South Poland). *Dipteron* 32: 17–26.
- González CR (1998) First record for Chile of *Melanophora roralis* (Linnaeus) (Diptera: Rhinophoridae). *Acta Entomologica Chilena* 22: 111–112.
- Govett H (1946) The tegumental glands in the land Isopoda; the rosette glands. *The Quarterly journal of microscopical science* 87: 209–235.
- Greenaway P (1985) Calcium balance and moulting in the Crustacea. *Biological Reviews* 60: 425–454. <https://doi.org/10.1111/j.1469-185X.1985.tb00424.x>
- Guimarães JH (1977) Host-parasite and parasite-host catalogue of South American Tachinidae (Diptera). *Arquivos de Zoologia* 28: 1. <https://doi.org/10.11606/issn.2176-7793.v28i3p1-131>
- Herting B (1961) 64e Rhinophorinae. In: Lindner E (Ed.) *Die Fliegen der Palaearktischen Region*. Stuttgart, 1–36.
- Herting B (1993) Family Rhinophoridae. In: Soós Á, Papp L (Eds) *Catalogue of Palearctic Diptera*. Hungarian Natural History Museum, Budapest, 102–117.
- Irwin AG (1983) First record of Rhinophoridae (Dipt.) in *Porcellio spinicornis* Say (Isopoda, Porcellionidae). *Entomologist's Monthly Magazine* 121: 138.
- Jass J, Klausmeier B (2000) Endemics and Immigrants: North American Terrestrial Iso-pods (Isopoda, Oniscidea) North of Mexico. *Crustaceana* 73: 771–799. <https://doi.org/10.1163/156854000504804>
- Jones FM (1948) Notes on *Melanophora roralis* (Linn.) (Diptera). *Psyche: A Journal of Entomology* 55: 31–34. <https://doi.org/10.1155/1948/74989>
- Kugler J (1978) The Rhinophoridae (Diptera) of Israel. *Israel Journal of Entomology* 12: 65–106.
- Lopes ERDC, Mendonça Jr MDS, Bond-Buckup G, Araujo PB (2005) Oniscidea diversity across three environments in an altitudinal gradient in northeastern Rio Grande do Sul, Brazil. *European Journal of Soil Biology* 41: 99–107. <https://doi.org/10.1016/j.ejsobi.2005.11.002>
- Mulieri PR, Patitucci LD, Mariluis JC, Pape T (2010) Long-distance introduction: First new world record of *Stevenia deceptor* (Loew) and a key to the genera of new world Rhinophoridae (Diptera). *Zootaxa* 2524: 66–68.
- Nash R (1985) The Irish Species of Rhinophoridae (Diptera). *The Irish Naturalists' Journal* 21: 463–464. <http://www.jstor.org/stable/25538930>
- Nihei SS (2016) Family Rhinophoridae. *Zootaxa* 4122: 881–883. <https://doi.org/10.11646/zootaxa.4122.1.74>

- Nihei SS, Andrade MR (2014) Revision of *Trypetidomima* (Diptera: Rhinophoridae) with description of a new Brazilian species. *Florida Entomologist* 97: 724–733. <https://doi.org/10.1653/024.097.0254>
- Nihei SS, Andrade MR, Pape T, Cerretti P (2016) The *Shannoniella* sisters (Diptera: Rhinophoridae). *Zootaxa* 4061: 85. <https://doi.org/10.11646/zootaxa.4061.1.9>
- O'Hara JE, Cerretti P, Dahlem GA (2015) First North American record of the Palaearctic rhinophorid *Stevenia deceptoria* (Loew) (Diptera: Rhinophoridae). *Zootaxa* 4058: 293–295. <https://doi.org/10.11646/zootaxa.4058.2.11>
- Overbeck GE, Müller SC, Pillar VD, Pfadenhauer J (2006) Floristic composition, environmental variation and species distribution patterns in burned grassland in southern Brazil. *Brazilian Journal of Biology* 66: 1073–1090. <https://doi.org/10.1590/S1519-69842006000600015>
- Pape T (2010) Rhinophoridae. In: Brown BV, Borkent A, Cumming JM, Wood DM, Woodley NE, Zumbado M (Eds) *Manual of Central American Diptera*. NRC Press, Ottawa, 1337–1341.
- Pape T, Arnaud PH (2001) *Bezzimyia* – a genus of native New World Rhinophoridae (Insecta, Diptera). *Zoologica Scripta* 30: 257–297. <https://doi.org/10.1046/j.1463-6409.2001.00064.x>
- Parker HL (1953) Miscellaneous notes on South American dipterous parasites. *Bolletino del Laboratorio di Entomologia Agraria Filippo Silvestri di Porcini* 12: 45–73.
- Quadros AF, Bugs PS, Araujo PB (2012) Tonic immobility in terrestrial isopods: intraspecific and interspecific variability. *ZooKeys* 176: 155–170. <https://doi.org/10.3897/zookeys.176.2355>
- Roer RD, Abehsera S, Sagi A (2015) Exoskeletons across the Pancrustacea: Comparative morphology, physiology, biochemistry and genetics. *Integrative and Comparative Biology* 55: 771–791. <https://doi.org/10.1093/icb/icv080>
- Rognes K (1986) The Rhinophoridae of woodlouse-flies (Diptera) of Norway. *Fauna Norvegica Serie B* 33: 64–68.
- Sassaman C, Garthwaite R (1984) The interaction between the terrestrial isopod *Porcellio scaber* Latreille and one of its dipteran parasites, *Melanophora roralis* (L.) (Rhinophoridae). *Journal of Crustacean Biology* 4: 595–603. <https://doi.org/10.2307/1548074>
- Sassaman C, Pratt G (1992) *Melanophora roralis*, a parasite of isopod crustaceans, in laboratory culture. *Entomologist* 111: 178–186.
- Schmalfuss H (1984) Eco-morphological strategies in terrestrial isopods. *Symposia of the Zoological Society of London* 53: 49–63.
- Schmalfuss H (2003) *World catalog of terrestrial isopods (Isopoda: Oniscidea)*. *Stuttgarter Beiträge zur Naturkunde Serie A*: 1–341.
- Steel CGH (1993) Storage and translocation of integumentary calcium during the moult cycle of the terrestrial isopod *Oniscus asellus* (L.). *Canadian Journal of Zoology* 71: 4–10. <https://doi.org/10.1139/z93-002>
- Sutton SL (1980) *Woodlice* (2nd edn). Pergamon Press, Oxford, 144 pp.
- Thompson WR (1934) The tachinid parasites of woodlice. *Parasitology* 26: 378–448. [pls XV–XXII] <https://doi.org/10.1017/S0031182000023714>
- Verves YG, Khrokalo LA (2010) The new data on Calliphoridae and Rhinophoridae (Diptera) from Ukraine. *Ukrainska Entomofaunistyka* 1: 23–54.

- Wijnhoven H (2001) Biologie en ecologie van de Nederlandse pissebedvliegen (Diptera: Rhinophoridae). Nederlandse faunistische mededelingen 15: 91–110.
- Wijnhoven H, Zeegers T (1999) Faunistisch overzicht van de Nederlandse pissebedvliegen (Diptera: Rhinophoridae). Nederlandse faunistische mededelingen 9: 113–126.
- Wood CT, Kostanjšek R, Araujo PB, Štrus J (2017) Morphology, microhabitat selection and life-history traits of two sympatric woodlice (Crustacea: Isopoda: Oniscidea): a comparative analysis. Zoologischer Anzeiger 268: 1–10. <https://doi.org/10.1016/j.jcz.2017.04.008>
- Wood DM (1987) Rhinophoridae. In: McAlpine J, Peterson B, Shewell G, Teskey H, Vockeroth J, Wood D (Eds) Manual of Nearctic Diptera. Volume 2. Agriculture Canada Monograph 28. Canada Communication Group, Ottawa, 1187–1192.
- Ziegler A (1994) Ultrastructure and electron spectroscopic diffraction analysis of the sternal calcium deposits of *Porcellio scaber* Latr. (Isopoda, Crustacea). Journal of Structural Biology 112: 110–116. <https://doi.org/10.1006/jsbi.1994.1012>
- Ziegler J (2008) 4.3.20 Rhinophoridae. In: Ziegler J (Ed.) Diptera Stelviana. A Dipterological Perspective on a Changing Alpine Landscape, 221–228.
- Zimmer M (2002) Nutrition in terrestrial isopods (Isopoda: Oniscidea): an evolutionary-ecological approach. Biology Review 77: 455–493. <https://doi.org/10.1017/S1464793102005912>

Supplementary material 1

Compilation of Isopoda-Rhinophoridae records (Dataset)

Authors: Camila T Wood, Silvio S Nihei, Paula B Araujo

Data type: species data

Copyright notice: This dataset is made available under the Open Database License (<http://opendatacommons.org/licenses/odbl/1.0/>). The Open Database License (ODbL) is a license agreement intended to allow users to freely share, modify, and use this Dataset while maintaining this same freedom for others, provided that the original source and author(s) are credited.

Link: <https://doi.org/10.3897/zookeys.801.26052.suppl1>

Supplementary material 2

Rhinophoridae larva from a Neotropical woodlouse species

Authors: Camila T Wood, Silvio S Nihei, Paula B Araujo

Data type: multimedia

Copyright notice: This dataset is made available under the Open Database License (<http://opendatacommons.org/licenses/odbl/1.0/>). The Open Database License (ODbL) is a license agreement intended to allow users to freely share, modify, and use this Dataset while maintaining this same freedom for others, provided that the original source and author(s) are credited.

Link: <https://doi.org/10.3897/zookeys.801.26052.suppl2>