

See discussions, stats, and author profiles for this publication at: <https://www.researchgate.net/publication/344338908>

# Marine exotic isopods of the Iberian Peninsula: new arrivals and patterns of introduction

Poster · September 2018

CITATIONS

0

READS

62

3 authors:



**Gemma Martínez Laiz**  
Universidad de Sevilla

23 PUBLICATIONS 232 CITATIONS

[SEE PROFILE](#)



**Macarena Ros**  
Universidad de Sevilla

76 PUBLICATIONS 1,017 CITATIONS

[SEE PROFILE](#)



**José Manuel Guerra-García**  
Universidad de Sevilla

277 PUBLICATIONS 4,540 CITATIONS

[SEE PROFILE](#)

Some of the authors of this publication are also working on these related projects:



Research Topic on Frontiers in Marine Science [View project](#)



El uso de los gammáridos en Acuicultura [View project](#)



# MARINE EXOTIC ISOPODS FROM THE IBERIAN PENINSULA: NEW ARRIVALS AND PATTERNS OF INTRODUCTION



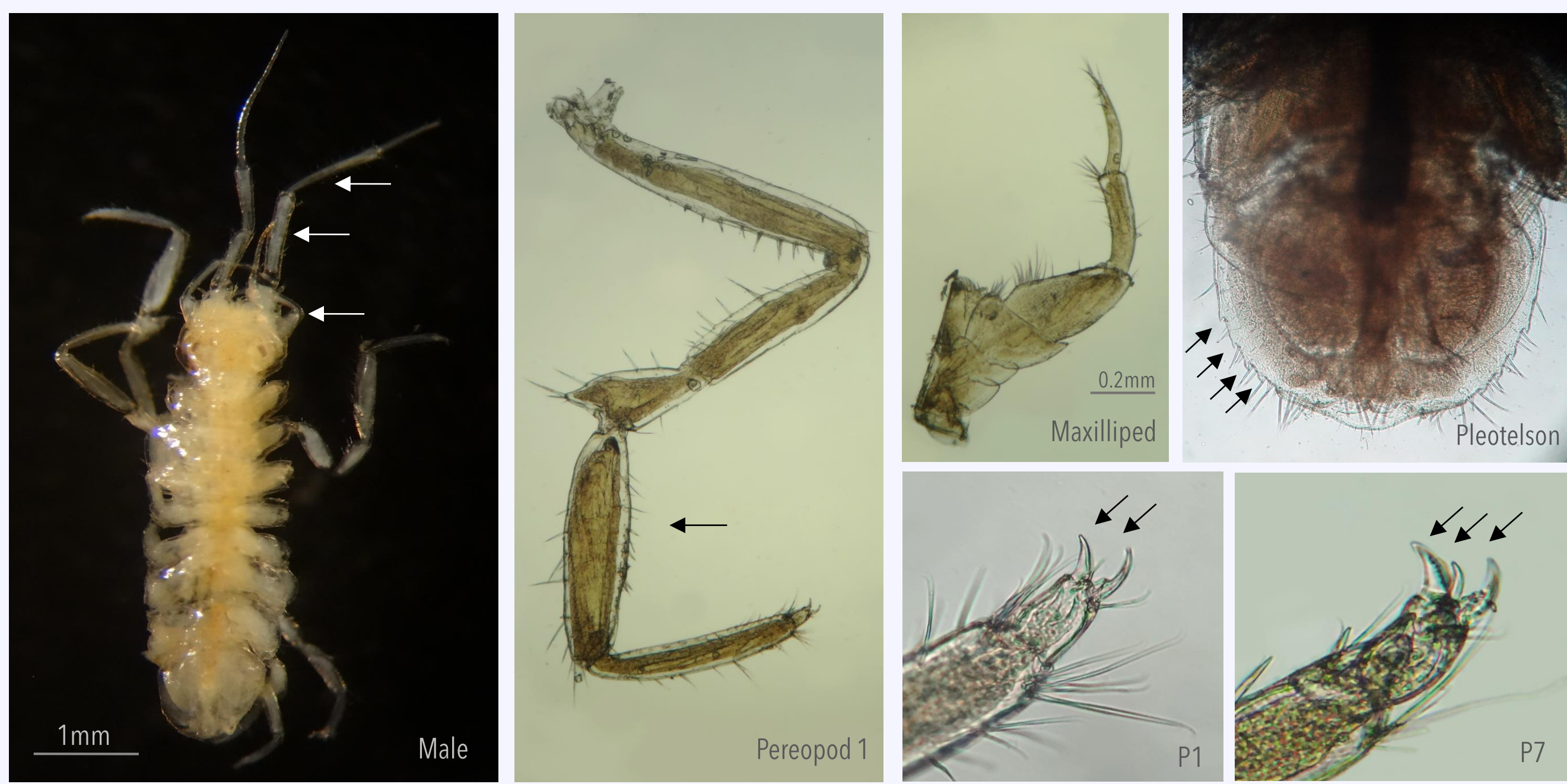
Martínez-Laiz G\*<sup>1</sup>, Ros M<sup>2</sup>, Guerra-García JM<sup>1</sup> \*martinezlaiz@us.es



<sup>1</sup> Laboratorio de Biología Marina, Departamento de Zoología, Facultad de Biología, University of Seville, 41012, Seville, SPAIN

<sup>2</sup> Departamento de Biología, CASEM. Facultad de Ciencias del Mar y Ambientales, Campus Universitario de Puerto Real, 11510, Cadiz, SPAIN

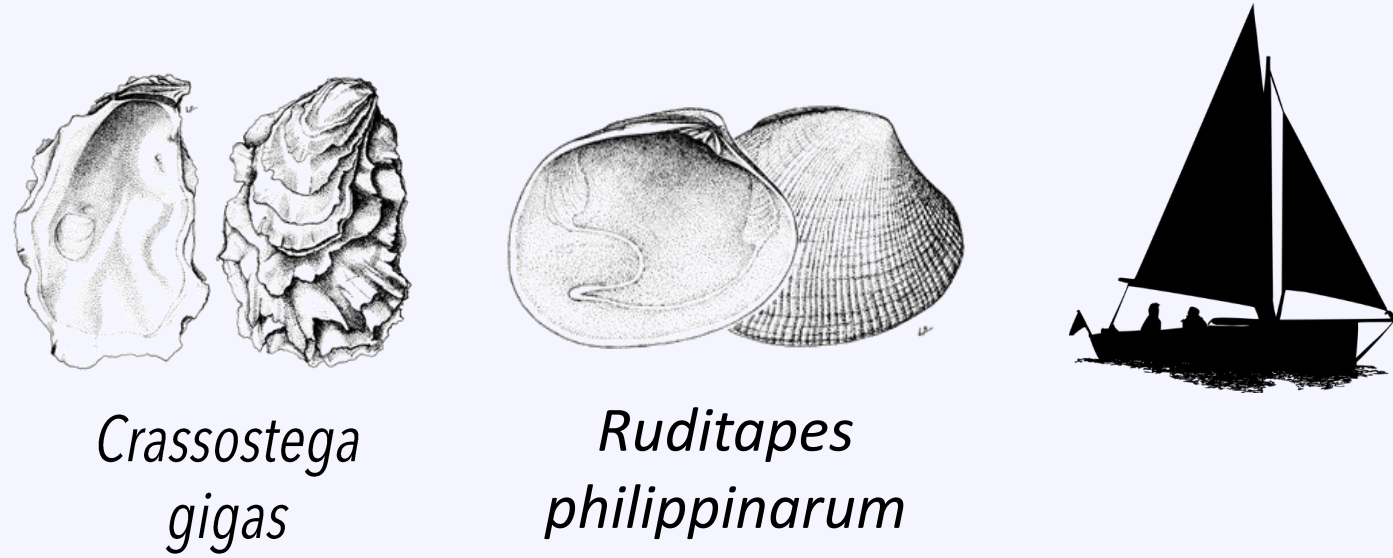
## • *Ianiropsis serricaudis*



Origin: western Pacific (Russia, Japan and Korea)

Introduced in:  
E and W coast USA; England, the Netherlands, Adriatic Sea, \* first record for the Lusitanian marine province

Vectors:



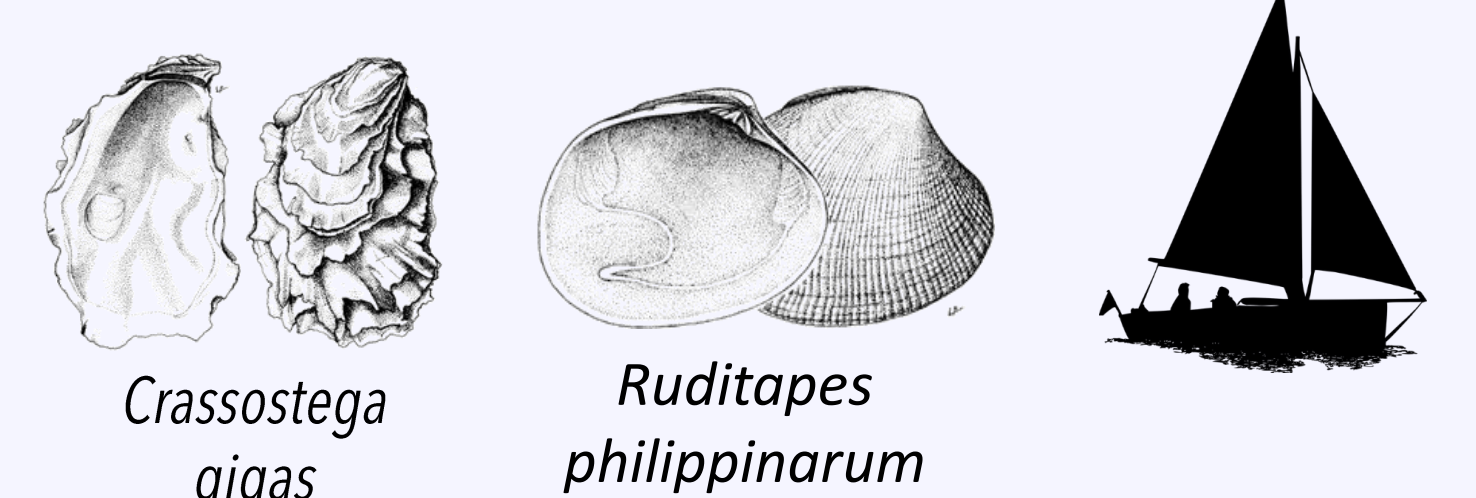
## • *Paranthura japonica*



Origin: Japanese coasts, eastern Russia, Kuril Islands and eastern China

Introduced in:  
California, Arcachon Bay (France), Italy (Mediterranean Sea), E and S Iberian Peninsula

Vectors:



## • *Paracerceis sculpta*



Origin: northeastern Pacific (San Quintin Bay, Baja California, Gulf of California)

Introduced in:  
Hawaii, Brazil, Gulf of Mexico, China, Taiwan, Japan, Australia, Northwest Indian Ocean, South Africa, Mediterranean Sea, Azores, Madeira, \*further spread along the southern Iberian Peninsula, \*first record for the Alboran Sea ecoregion.

Vector:



## • *Sphaeroma walkeri*



Origin: northern Indian Ocean (India, Arabian Sea and Bay of Bengal)

Introduced in:  
Persian Gulf (?), South Africa, Mozambique, Australia, China, Mediterranean Sea, Hawaii, from Florida to Brazil, California, Northwest coast of Africa, Cadiz Bay (southern Iberian Peninsula)

Vector:



## • *Paradella diana*



Origin: northeastern Pacific (from Ventura County to Michoacán) and the Gulf of California

Introduced in:  
Western Atlantic (Puerto Rico, Brazil), Marshall Islands, Hong Kong, Australia, Pakistan, southeastern coast of USA, Mediterranean Sea, southern Iberian Peninsula

Vector:

