

# Parasites in the Fossil Record: A Cretaceous Fauna with Isopod-Infested Decapod Crustaceans, Infestation Patterns through Time, and a New Ichnotaxon

Adiël A. Klompmaker<sup>1,2\*</sup>, Pedro Artal<sup>3</sup>, Barry W. M. van Bakel<sup>4,5</sup>, René H. B. Fraaije<sup>4</sup>, John W. M. Jagt<sup>6</sup>

**1** Florida Museum of Natural History, University of Florida, Gainesville, Florida, United States of America, **2** Department of Geology, Kent State University, Kent, Ohio, United States of America, **3** Museo Geológico del Seminario de Barcelona, Barcelona, Spain, **4** Oertijdmuseum De Groene Poort, Boxtel, The Netherlands, **5** Naturalis Biodiversity Center, Leiden, The Netherlands, **6** Natuurhistorisch Museum Maastricht, Maastricht, The Netherlands

## Abstract

Parasites are common in modern ecosystems and are also known from the fossil record. One of the best preserved and easily recognisable examples of parasitism in the fossil record concerns isopod-induced swellings in the branchial chamber of marine decapod crustaceans. However, very limited quantitative data on the variability of infestation percentages at the species, genus, and family levels are available. Here we provide this type of data for a mid-Cretaceous (upper Lower Cretaceous, upper Albian) reef setting at Koskobilo, northern Spain, on the basis of 874 specimens of anomurans and brachyurans. Thirty-seven specimens (4.2%), arranged in ten species, are infested. Anomurans are more heavily infested than brachyurans, variability can be high within genera, and a relationship may exist between the number of specimens and infestation percentage per taxon, possibly suggesting host-specificity. We have also investigated quantitative patterns of infestation through geological time based on 88 infested species (25 anomurans, 55 brachyurans, seven lobsters, and one shrimp), to show that the highest number of infested species can be found in the Late Jurassic, also when corrected for the unequal duration of epochs. The same Late Jurassic peak is observed for the percentage of infested decapod species per epoch. This acme is caused entirely by infested anomurans and brachyurans. Biases (taphonomic and otherwise) and causes of variability with regard to the Koskobilo assemblage and infestation patterns through time are discussed. Finally, a new ichnogenus and -species, *Kanthyloma crusta*, are erected to accommodate such swellings or embedment structures (bioclastrations).

**Citation:** Klompmaker AA, Artal P, van Bakel BWM, Fraaije RHB, Jagt JWM (2014) Parasites in the Fossil Record: A Cretaceous Fauna with Isopod-Infested Decapod Crustaceans, Infestation Patterns through Time, and a New Ichnotaxon. PLoS ONE 9(3): e92551. doi:10.1371/journal.pone.0092551

**Editor:** Brock Fenton, University of Western Ontario, Canada

**Received:** June 21, 2013; **Accepted:** February 21, 2014; **Published:** March 25, 2014

**Copyright:** © 2014 Klompmaker et al. This is an open-access article distributed under the terms of the Creative Commons Attribution License, which permits unrestricted use, distribution, and reproduction in any medium, provided the original author and source are credited.

**Funding:** Fieldwork at Koskobilo was in part supported by the Molengraaff Fonds, an Amoco Alumni Scholarship, a Graduate Student Senate (Kent State University) research grant, and a Sigma Gamma Epsilon (Gamma Zeta Chapter) research grant to AAK, as well as an NSF grant (EF-0531670) to Feldmann and Schweitzer. This work was further supported by the Jon L. and Beverly A. Thompson Endowment Fund (Florida Museum of Natural History, University of Florida) to AAK. The funders had no role in study design, data collection and analysis, decision to publish, or preparation of the manuscript.

**Competing Interests:** The authors have declared that no competing interests exist.

\* E-mail: adielklompmaker@gmail.com

## Introduction

Parasites are common in modern ecosystems (e.g., [1,2]) and are also known from the terrestrial and marine fossil record (e.g., [3–6]). Parasites are ecologically and evolutionarily important because they influence food webs and can lead to co-evolution of host and parasite. Convincing evidence of parasites in marine invertebrates is known since the Ordovician, yet the number of parasitic associations is often lower than ten per geologic period [5], at least in part related to insufficient preservation and recognition.

The order Isopoda comprises a diverse array of generally small crustaceans, with over 10,000 extant species known from terrestrial (i.e., woodlice and pill bugs), and fresh- and ocean water settings [7]. Swellings of parasitic isopods that use other crustaceans as hosts (i.e., epicarideans) are found commonly in the fossil record, are easily recognised, and preserve relatively well. Extant epicarideans include the superfamilies Bopyroidea and Cryptoniscoidea [8] (Fig. 1). The cryptoniscoideans are mentioned to be endoparasitic to crustaceans including some decapods [8], but no body or other fossil evidence is known. Extant dajid

cryptoniscooids are ectoparasitic and found on several hosts (euphausiids, mysids and shrimps) [8]. Extant bopyroids are assigned to three families, the Bopyridae, Ionidae and Entoniscidae [9]. Entoniscids are endoparasitic, whereas members of the two other families are mostly ectoparasitic, inclusive of occurrence under the cuticle on the gills [8]. Bopyrids and ionids have been recorded from a variety of extant decapod crustaceans including shrimps, Anomura, and Brachyura [8,10]. These ectoparasitic epicarideans cause the formation of swellings ('cysts') or deformations of the cuticle of their hosts, often in the branchial region of decapod crustaceans. New cuticle bulges around the parasite after each moulting event and may leave space for the female isopod (and often the accompanying, smaller male) to grow, perhaps resulting in less damage to the gills than otherwise would have been inflicted [11]; thus, the isopod grows along with its decapod host (e.g., [12]). Importantly, similarly shaped swellings have also been documented from the fossil record (e.g., [13–20]) and arguably represent one of the most obvious examples of parasitism in the fossil record. These have generally been assumed to be of bopyrid origin. The appearance as swellings does not allow

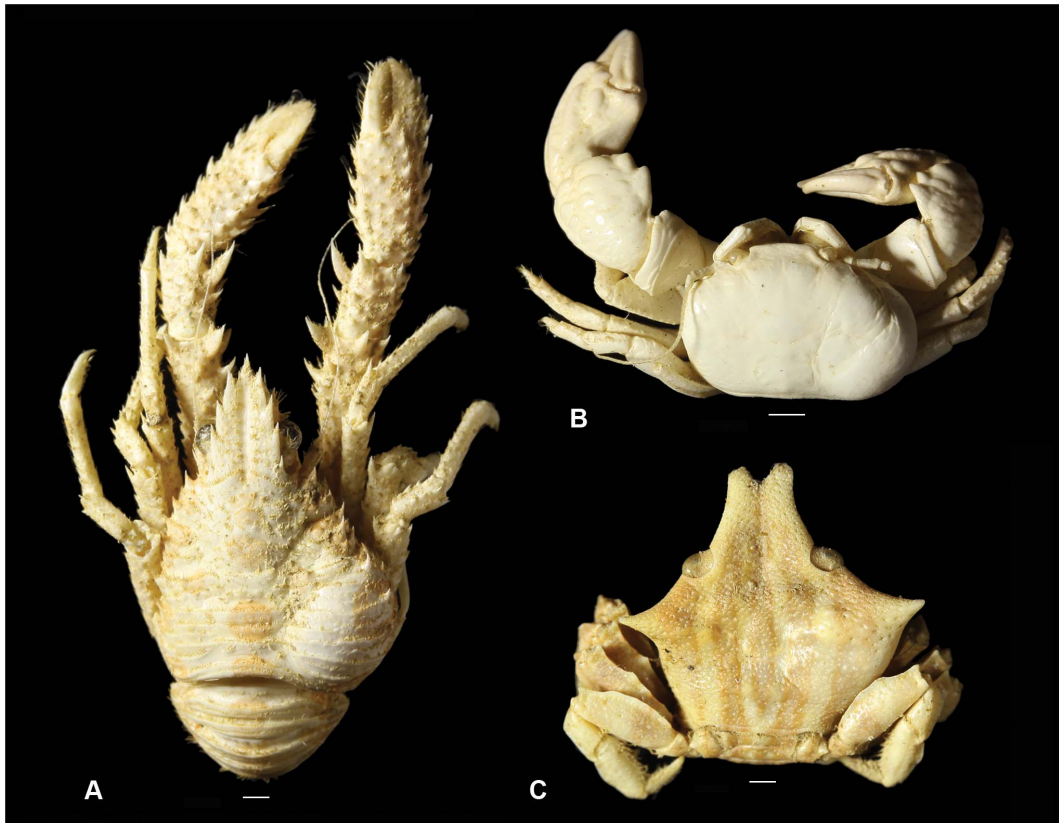
identification at lower taxonomic ranks and, as such, has little or nothing to add to the diversity of extinct isopods. The stratigraphically oldest swellings on record are from the Jurassic, i.e., Oxfordian (Late Jurassic, 163.5–157.3 Ma) for Anomura and Brachyura and ?Toarcian (Lower Jurassic; 182.7–174.1 Ma) for lobsters, but no infested specimens of fossil shrimps were known [18] until very recently [182].

Unfortunately, there are no records of isopod remains from within such swellings. However, most of the authors listed above (i.e., [14–16,19]) did ascribe them to infestation by bopyrids, with reference to extant examples. However, Wienberg Rasmussen *et al.* [18] suggested to use the term ‘bopyriform swelling’ instead, in view of the fact that other epicaridean genera are known to infest modern decapod crustaceans and that carapaces with other deformities are on record, although they provided no details in support of this. However, Shields & Kuris [21] reported on a lateral inflation in the left branchial region of the extant brachyuran *Hemigrapsus nudus* ([22]) caused by an isopod of the family Entoniscidae. The assumption made by many authors is that members of the family Bopyridae have been around since the Jurassic and have been infesting the same groups of decapod crustaceans and in the same general carapace area since that time. Obviously, such a hypothesis cannot be tested unless isopods are actually found within their host, which requires exquisite preservation. We concur with Wienberg Rasmussen *et al.* [18] that it cannot be considered a fact that these swellings have indeed all been caused by bopyrid isopods. Instead, the great majority of these swellings are most likely the result of embedment by some

group, or several groups, within the order Isopoda. Thus, they can be considered to represent possible trace fossils of a bioclaustration signature.

Very limited quantitative data with regard to the occurrence of such swellings in the fossil record are available. Most data refer to percentages for entire decapod crustacean assemblages. On the basis of 3,000 specimens, Bachmayer [23] noted that 2% of Tithonian (Late Jurassic, 152.1–145.0 Ma) anomurans (galatheoids) and brachyurans (‘prosoptoniden’) from Ernstbrunn (Austria) were affected, while Houša [15] computed 3.82% for Tithonian assemblages from Štramberk (Czech Republic), based on 890 specimens. For the Oxfordian of Poland, Radwański [16] noted that seven out of more than 500 ‘prosoptonid’ brachyurans (i.e., <1.4%) revealed a swelling. These comprised the species *Pithonoton marginatum* [24] (5 infested specimens), and one specimen each of *Eodromites rostratus* ([25]) and *Planoprosopon heydeni* ([26]). Wienberg Rasmussen *et al.* [18] supplied some species-level data for the Maastrichtian (Late Cretaceous, 72.1–66.0 Ma) of West Greenland, as follows: 73/1,295 (=5.64%) specimens of the raninoid *Macroacaena rosenkrantzi* ([27]) were affected, whereas the contemporary congener *M. succedana* ([27]) was free from infestation, presumably based on 193 specimens [27]. The co-occurring lobster *Mecochirus rostratus* [27], yielded a low percentage (2/2,163, ~0.1%).

The goals of the present paper are to record swellings in the branchial chamber from a variety of anomuran and brachyuran decapods from the Lower Cretaceous (upper Albian) of northern Spain, to address biases and quantify infestation patterns through



**Figure 1. Examples of isopod-infested decapods from the modern environment.** A, *Galathea* sp., Camiguin, Philippines (MAB k. 3297); B, *Pachycheles garciaensis* [122], Camiguin, Philippines (MAB k. 3298); C, *Eumedonus zebra* [123], Camiguin, Philippines (MAB k. 3299). Scale bars are 1.0 mm wide.

doi:10.1371/journal.pone.0092551.g001

**Table 1.** The total number of studied specimens per species from the late Albian Koskobilo fauna, the number of specimens with a swelling, the percentage of infestation, and the number of infested specimens per branchial side.

Anomuran (A) or brachyuran (B) family	Genus and species	Specimens studied	Specimens with a swelling	Percentage	Swelling in left branchial side	Swelling in right branchial side
(A) Galatheidae	<i>Eomunidopsis aldoirarensis</i> [32]	17	3	17.6	2	1
(A) Galatheidae	<i>E. navarrensis</i> ([127])	174	21	12.1	11	10
(A) Galatheidae	<i>E. orobensis</i> ([128])	24	0	0.0		
(A) Galatheidae	<i>Hispanigalthea pseudolaevis</i> [32]	15	0	0.0		
(A) Galatheidae	<i>H. tuberosa</i> [32]	1	0	0.0		
(A) Galatheidae	<i>Paragalthea multisquamata</i> [129]	2	0	0.0		
(A) Galatheidae	<i>P. ruizi</i> ([127])	136	5	3.7	1	4
(A) Galatheidae	<i>P. straeleni</i> ([128])	4	0	0.0		
(A) Munidopsidae	<i>Nykteripteryx rostrata</i> [32]	3	0	0.0		
(A) Gastrodoridae	<i>Gastrodorus cretahispanicus</i> [31]	10	0	0.0		
(B) ?Macropipidae	<i>Faksecarcinus</i> (cf.) <i>koskobiloensis</i> ([28])	10	2	20.0	2	
(B) Dynomenidae	<i>Graptocarcinus texanus</i> [130]	59	1	1.7	1	
(B) Etyidae	<i>Etyxanthosia fossa</i> ([131])	2	0	0.0		
(B) Feldmanniidae	<i>Caloxanthus paraornatus</i> [28]	59	1	1.7		1
(B) Goniidromitidae	<i>Distefania incerta</i> ([132])	69	0	0.0		
(B) Goniidromitidae	<i>D. renefraaijei</i> [34]	13	1	7.7		1
(B) Goniidromitidae	<i>Eodromites grandis</i> ([26])	23	0	0.0		
(B) Goniidromitidae	<i>Goniidromites laevis</i> ([127])	119	1	0.8	1	
(B) Goniidromitidae	<i>Laeviprosopon crassum</i> [29]	4	0	0.0		
(B) Goniidromitidae	<i>L. edoi</i> [29]	3	0	0.0		
(B) Goniidromitidae	<i>L. hispanicum</i> [29]	2	0	0.0		
(B) Goniidromitidae	<i>L. planum</i> [29]	2	0	0.0		
(B) Goniidromitidae	<i>Navarradromites pedroartali</i> [34]	11	0	0.0		
(B) Prosopidae	<i>Acareprosopon bouvieri</i> ([133])	70	1	1.4	1	
(B) Prosopidae	<i>Rathbunopon obesum</i> ([133])	15	0	0.0		
(B) Homolidae	<i>Navarrahomola hispanica</i> [35]	2	0	0.0		
(B) Longodromitidae	<i>Navarrara betsiei</i> [29]	4	0	0.0		
(B) Necrocarcinidae	<i>Glyptodynomene alsasuensis</i> [133]	4	0	0.0		
(B) Torynommidae	<i>Albenizus minutus</i> [29]	3	0	0.0		
(B) Viaiidae	<i>Viaia robusta</i> [35]	14	1	7.1		1
	<b>total</b>	<b>874</b>	<b>37</b>	<b>4.2</b>	<b>19</b>	<b>18</b>

Paguroids [30,36] are not listed as their branchial chambers are not preserved typically; the rare priscinachid majoids [29] did not preserve both branchial sides. doi:10.1371/journal.pone.0092551.t001

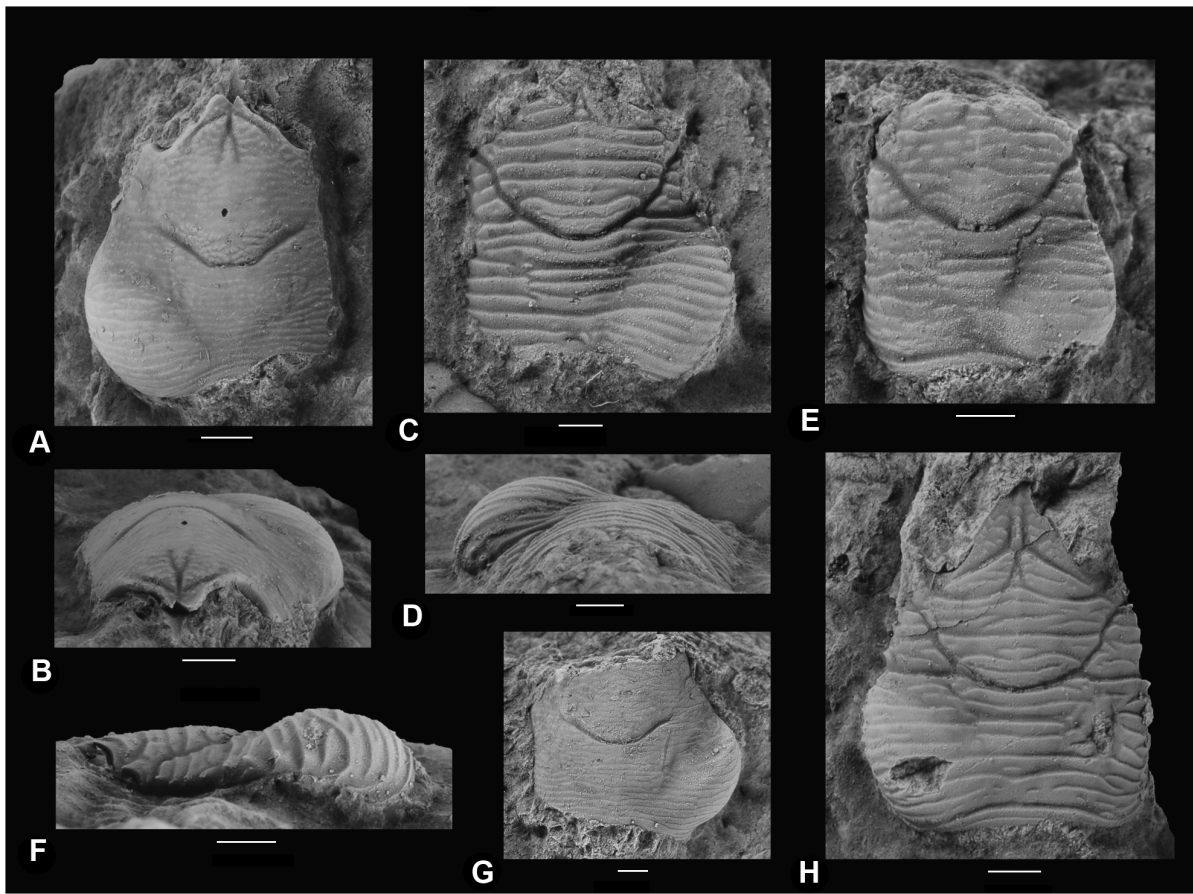
time, and to erect and describe a new ichnogenus and -species. Finally, since previous studies of such ‘cysts’ suffered from limited quantification, we suggest a systematic methodology of collecting and counting along a range of systematic ranks, which has not been done previously.

## Materials and Methods

The material studied was collected from the Aldoirar patch reef as exposed at the Koskobilo quarry (42°52′56″N/2°11′59″W) in northern Spain, 2 km southwest of Alsasua (see [28]). The reef-associated limestones from the Eguino Formation (Albeniz Unit) are of mid-Cretaceous (late Early Cretaceous, late Albian) age [29]. The taxonomy and paleoecology of decapod crustaceans from this locality have recently been studied in detail [28–38]. Decapod crustaceans were collected from this locality during the summers of 2008–2012; these form the basis for the present study.

In total, 874 anomuran and brachyuran specimens, assigned to 30 species, 21 genera and 14 families were studied for swellings. A bias towards certain decapod groups or infested decapods was circumvented by collecting all specimens. In order to quantify the percentage of swellings per taxon, specimens with both branchial sides visible to the extent that the presence or absence of a swelling could be determined for both branchial sides, were selected. The percentage of specimens with swellings was studied subsequently at the species, genus, and family levels. It was also noted whether the swelling occurred in the left or right branchial side. The Cementos Portland Valderrivas Company (Olazti, Navarra), on behalf of Anna Hernández, gave permission for fieldwork in their Koskobilo quarry. All necessary permits were obtained for the described study, which complied with all relevant regulations.

To study infestation patterns through geological time, the number of infested species per post-Triassic epoch is compiled and standardised per 20 Myr for each epoch. The January 2013



**Figure 2. Carapaces of late Albian anomurans from Koskobilo (Spain) showing swellings (*Kanthylooma crusta*) in the branchial regions.** *Paragalathea ruizi* (MAB k. 3008, with paratype of *Kanthylooma crusta*, MAB k. 3008-i) in dorsal (A) and frontal view (B); *Eomunidopsis navarrensis* (MGSB78339, with holotype of *Kanthylooma crusta*, MGSB78340) in dorsal (C) and frontal view (D); E, *Eomunidopsis aldoirarensis* (MAB k. 2981+ ichnofossil MAB k. 2981-i) in dorsal view; F, *Eomunidopsis navarrensis* (MAB k. 2982+ ichnofossil MAB k. 2982-i) in left-lateral view; G, *Paragalathea ruizi* (MAB k. 3189+ ichnofossil MAB k. 3189-i) in dorsal view; and H, *Eomunidopsis navarrensis* (MAB k. 2644+ ichnofossil MAB k. 2644-i) in dorsal view. Scale bars are 1.0 mm wide. doi:10.1371/journal.pone.0092551.g002

geological time scale of the International Commission on Stratigraphy was used to obtain the duration of each epoch. Periods after the Triassic were chosen because these swellings are unknown from pre-Jurassic decapods. Since this measure could be influenced by a variable number of species present per epoch, the percentage of species infested per epoch was calculated from the Early Jurassic – Late Cretaceous only because most variation in the number of infested species occurred within this time frame as suggested by previous research [18] and results herein. Decapod species diversity also fluctuated greatly in the Jurassic and Cretaceous [39]. Species recorded solely from an epoch boundary interval have not been included. Both measures were done for all Decapoda as well as for the decapod subgroups Brachyura, galatheid anomurans, and lobsters (infraorders Achelata, Astacidea, Glypheidea, and Polychelidea) since swellings are only known from these decapod groups. Additionally, a possible relationship between the number of specimens and the percentages of infestation is studied at the species, genus, and family level.

Specimen numbers preceded by MAB are stored in Oertijdmuseum De Groene Poort, Boxtel, The Netherlands. Those preceded by MGSB are deposited in Museo Geológico del Seminario de Barcelona, Barcelona, Spain.

## Nomenclatural Acts

The electronic edition of this article conforms to the requirements of the amended International Code of Zoological Nomenclature, and hence the new names contained herein are available under that Code from the electronic edition of this article. This published work and the nomenclatural acts it contains have been registered in ZooBank, the online registration system for the ICZN. The ZooBank LSIDs (Life Science Identifiers) can be resolved and the associated information viewed through any standard web browser by appending the LSID to the prefix “<http://zoobank.org/>”. The LSID for this publication is: urn:lsid:zoobank.org:pub:9EAA81B7-42F3-406F-9AE7-23989AA15238. The electronic edition of this work was published in a journal with an ISSN, and has been archived and is available from the following digital repositories: PubMed Central, LOCKSS.

## Results

A stepwise decrease in the percentage of infestation is observed from the family to the species level: 7/14 (50%) of the families, 9/21 (43%) of the genera, and 10/30 (33%) of the species present in the sample from Koskobilo were infested. At the specimen level, 37 of 874 decapod crustaceans (4.2%) showed a swelling at one of





**Figure 3. Carapaces of late Albian brachyurans from Koskobilo (Spain) showing swellings (*Kanthyloma crusta*) in the branchial regions.** *Acareprosoyon bouvieri* (MAB k. 3300+ ichnofossil MAB k. 3300-i) in dorsal (A) and frontal view (B); *Graptocarcinus texanus* (MAB k. 3174+ ichnofossil MAB k. 3174-i) in dorsal (C) and frontal view (D); *Distefania renefraaijei* (MAB k. 2601, paratype *D. renefraaijei* with paratype of *Kanthyloma crusta*, MAB k. 2601-i) in dorsal (E) and frontal view (F); *Caloxanthus paraornatus* (MAB k. 3177, with paratype of *Kanthyloma crusta*, MAB k. 3177-i) in dorsal (G), right-lateral (H), and frontal view (I); *Faksecarcinus* cf. *F. koskobiloensis* (MAB k. 3149+ ichnofossil MAB k. 3149-i) in frontal (J) and dorsal view (K); *Viala robusta* (MGSB78508+ ichnofossil MGSB78509) in dorsal view (L); and *Goniodromites laevis* (MAB k. 3301+ ichnofossil MAB k. 3301-i) in dorsal view. E, F modified from Klompmaker *et al.* [34]; K modified from Klompmaker *et al.* [28]. Scale bars are 1.0 mm wide. doi:10.1371/journal.pone.0092551.g003

the branchial chambers (Table 1); no examples were found in which both branchial sides were infested. For anomurans only, 29 of 386 specimens (7.5%) showed a swelling (Fig. 2 for examples), whereas only 8 of 488 brachyuran specimens (1.6%) were infested (Fig. 3 for examples). At the family level for those represented by at least 30 specimens, galatheid specimens are most affected (29/373, 7.8%), whereas brachyuran families show distinctly lower infestation percentages (<2.0%). A similar pattern appears at the genus level and species level: the galatheoids *Eomunidopsis* (11.2%) and *Paragalathea* (3.5%) are more heavily infested than brachyuran genera (<2.0%), which is mainly caused by infestation in

abundantly present specimens of *Eomunidopsis navarrensis* (12.1%) and *Paragalathea nuzzi* (3.7%). Some infestation percentages in decapod species are high (*E. aldovirensis* and *Faksecarcinus* (cf.) *koskobiloensis*), but those are based on a limited number of specimens so far. There is no statistical preference for either the left or right branchial side for infestation on the assemblage level ( $\chi^2 = 0.03$ ,  $p = 0.99$ ) and for the most commonly infested species, *E. navarrensis* ( $\chi^2 = 0.05$ ,  $p = 0.98$ ) (Table 1). In contrast, preference for infestation in the left and right side was proposed and discussed previously for fossil and extant decapods, especially galatheoids (e.g., [12,14,18,40]).

Plotting the infestation percentage against number of specimens for taxa with at least 30 specimens yields a positive, significant correlation on the species and genus level, but not on the family level (Fig. 4). The number of species and the percentages of species affected per epoch show that infestation is highest in the Late Jurassic for all Decapoda, Brachyura, and galatheid anomurans, whereas infestation in lobsters is too low to make general statements (Figs. 5, 6; Tables 2, 3). More specifically, 11% of all decapod species are infested in the Late Jurassic, mainly caused by high percentages of infestation in Late Jurassic galatheid anomurans (34%) and Brachyura (21%), whereas these percentages are substantially lower in the epochs prior to and subsequent of the Late Jurassic (Fig. 6). Non-galatheid anomurans with these swellings are unknown from the fossil record, whereas only one fossil shrimp species shows such a swelling [182]. In total, 88 infested species are now known from the fossil record (Tables 2, 3), which is more than a 50% increase compared to the list in Wienberg Rasmussen *et al.* [18]. The decapod species containing such a swelling include 25 anomurans, 55 brachyurans, seven lobsters, and one shrimp (Tables 2, 3).

## Discussion

### Quantitative Data Koskobilo Fauna

Considerable variation in infestation percentages can be found within the Galatheidae, but also within the genus *Eomunidopsis*, supporting the need to determine infestation percentages at the species level to infer possible causes of this variation in the fossil record. Variable infestation percentages for congeners were also noted by Wienberg Rasmussen *et al.* [18] for *Macroacaena rosenkrantzii* and the contemporary *M. succedana* from the Maastriechian of Greenland (as noted above) and by Rayner [40] for modern *Munida gregaria* [41] (3.7% infested) and *M. subrugosa* [42] (7.4%), although *M. subrugosa* currently is considered a synonym of *M. gregaria* (e.g., [43]).

The fact that galatheids are more affected than any other family in this case could suggest that they were more prone to infestation than other taxa. Another hypothesis is that the percentage of infestation is positively influenced by the number of specimens: more specimens yield a higher percentage of infestation (Fig. 4) because of specialisation of isopods on abundant decapod taxa. This could increase their chances of finding a suitable host. However, it should be noted that data on the host-specificity of modern isopods on decapods are sparse [8,44,45], and that the trend is mostly driven by a high infestation percentage in a single species (*Eomunidopsis navarrensis*), suggesting that more research is needed to confirm or reject this hypothesis.

Life mode may also affect infestation percentages. For example, Rayner [40] noted that trawled (presumably mostly epifaunal) specimens of *Munida gregaria* were infested in 3.7% of cases, whereas only 2.9 and 1.9% of specimens in two samples of juvenile, pelagic conspecifics were infested. However, almost all extant galatheids are benthic in their post-larval stage (e.g., [46]), which suggests that variation in infestation percentage within this family may not be explained by variation in this type of life habit. Most brachyurans from the Koskobilo fauna probably were benthic as well, with the possible exception of *Faksecarcinus* (cf.) *koskobilensis* given its wide, short (heightwise) carapace shape. It may also be hypothesised that semi-epifaunal or infaunal decapods could be less likely to be exposed to water containing the isopod larvae seeking a decapod host. Hence, epifaunal and swimming decapods could have higher percentages of infestation than semi-epifaunal or infaunal decapods. Carapaces of the latter such as raninoids, certain lobsters, and thalassinids (e.g., [47–49]) are

usually longer than wide to promote burrowing. The hypothesis is not supported by decapods from the Koskobilo fauna as well-represented genera within Goniodromitidae (*Distefania*, *Eodromites*, and *Goniodromites*) and *Graptomarcinus* are wider than long or about equally wide as long [29,34], and, thus, may have been epifaunal, yet are hardly infested. Moreover, modern thalassinids are known to be infested [50]. Differences in life mode are, thus, not useful to explain the differences in infestation percentages when comparing Brachyura to Anomura here.

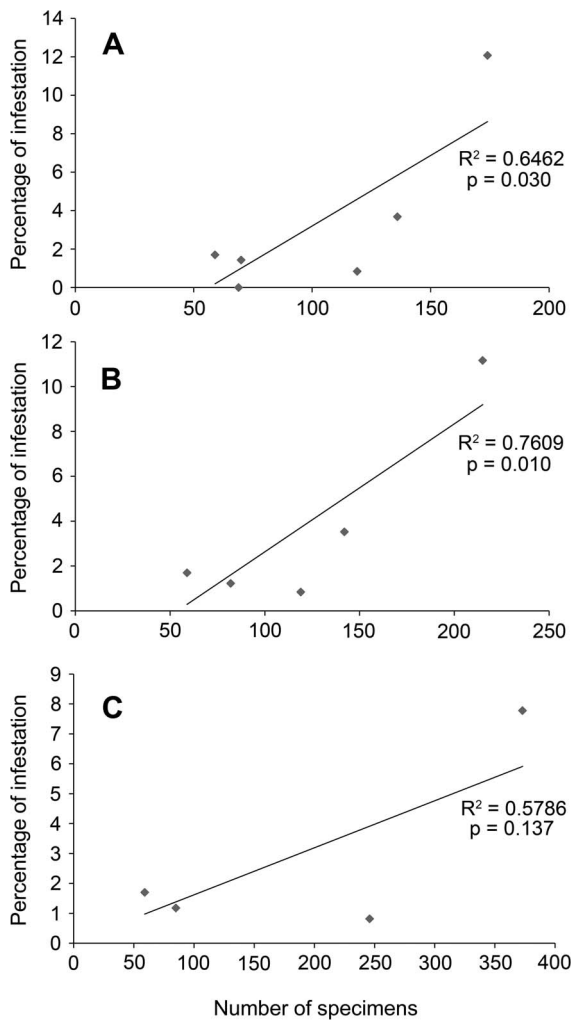
Another, hypothetical explanation may lie in the intrinsic effectiveness of keeping the isopod larvae out of the gill chambers and the effectiveness of removing these isopods once infested. Bauer [51] indicated that water in modern decapods is pumped into the gill chambers via a process of the maxilla, the scaphognathite, and that limiting the entry of material into the gills as well as cleaning is necessary because of the possibility of fouling by particulate matter, the growth of microbes, and epizoots. To this end, the water flow can be reversed, the incurrent opening of many decapods is protected by filters of setae, and decapods have several cleaning mechanisms often involving brushing by setae located on specialised parts of the extremities [51,52]. It must be concluded that the cleaning and preventing mechanisms failed to avoid and remove the entry and development of parasitic isopods in case of a visible infestation. In addition to the above-mentioned reasons, the differences in infestation percentages on the species, genus, and family level may be attributed to the relative effectiveness of these mechanisms, assuming they already had developed by mid-Cretaceous times. The higher-than-average infestation in galatheids may be related to a relatively low effectiveness of the gill cleaning mechanism in galatheids compared to Brachyura. Bauer [52] noted that crabs typically make use of setiferous epipods on the maxillipeds to clean the gills instead of the specialised chelate fifth pereopod pair in the galatheid *Pleuroncodes planipes* [53]. However, the relative effectiveness of these two mechanisms with respect to avoiding parasitism by isopods is unknown to us and deserves more research.

### Potential Biases in the Koskobilo Fauna

The percentages of infestation provided for the Koskobilo fauna and for other faunas may have been influenced by several biases. Williams & Boyko [8] noted that some bopyrid isopods of the subfamily Athelginae are parasitic on the abdomina of hermit and king crabs (Anomura), whereas the Hemiarthrinae and Phyllodurinae are parasitic on the abdomina of shrimps, although no true abdominal swellings are observed. In the present paper, possible swellings on the abdomina could not be observed as complete anomuran abdomina have not been found yet and shrimps are unknown from the fauna.

The percentages for the entire fauna and per species may represent maxima from the perspective that not all swellings in modern, living, infested decapods contain parasitic isopods anymore, albeit uncommon [12]. These parasites may have been dislodged during the moulting phase [54].

Another bias could be the preferential breakage of carapaces with (a) swelling(s), thereby artificially lowering the true percentage of affected taxa and specimens. For example, McDermott [11] noted that the infested branchial chamber of a specimen of the extant brachyuran *Pachygrapsus transversus* ([55]) was damaged. Actualistic experiments should substantiate or refute such an assumption, also by considering possible differences in cuticle thickness both over and away from the swelling, which is hardly investigated (but see Bursey [56], who found that the inner part of the cuticle was thicker in a single species of galatheid).



**Figure 4. The number of specimens vs infestation percentage at different taxonomic levels.** A, Species level; B, Genus level; C, Family level. Only those taxa with at least 30 specimens are included. doi:10.1371/journal.pone.0092551.g004

The percentage of the entire fauna could have been influenced by a relatively high or low preservation potential of taxa with swelling percentages that deviate from the average. These include, for example, paguroid anomurans and caridean shrimps, which are heavily infested in modern environments (e.g., [50]), but (useful) specimens are not found in Koskobilo. A deviant from average preservation potential of specimens of the highly infested and abundant species *Eomunidopsis navarrensensis* (see Table 1) may have influenced the overall infestation percentage.

Isopods are not expressed as a swelling on the carapace when they are too small to affect the carapace (see McDermott [11] for a modern example), thereby lowering the actual percentage of affected decapod specimens of a fauna. This may especially be the case for species with a large maximum size for which the isopod has to obtain a substantial size to be visible as a swelling expressed on the branchial region. Indeed, Roccatagliata & Lovrich [12] noted that the growth rate of the isopod parasite started to lag behind that of the extant anomuran *Paralomis granulosa* ([57]) once this species reached a carapace length of 30 mm. Thus, generally lower observable infestation percentages may be hypothesised in the fossil record for species with a larger maximum size compared to species with small maximum size. Although common species (at

least 30 specimens present) with a relatively large maximum size from the Koskobilo quarry show low infestation percentages (*Distefania incerta*, *Goniodromites laevis*, and *Graptocarcinus texanus*) (Table 1), so do part of the small species (*Acareprosopton bouvieri*, *Caloxanthus paraornatus*, and *Paragalathea ruizi*), thereby only in part supporting the hypothesis. On the other hand, decapods in this fauna are generally of small size (see Klompaker [29] and references therein).

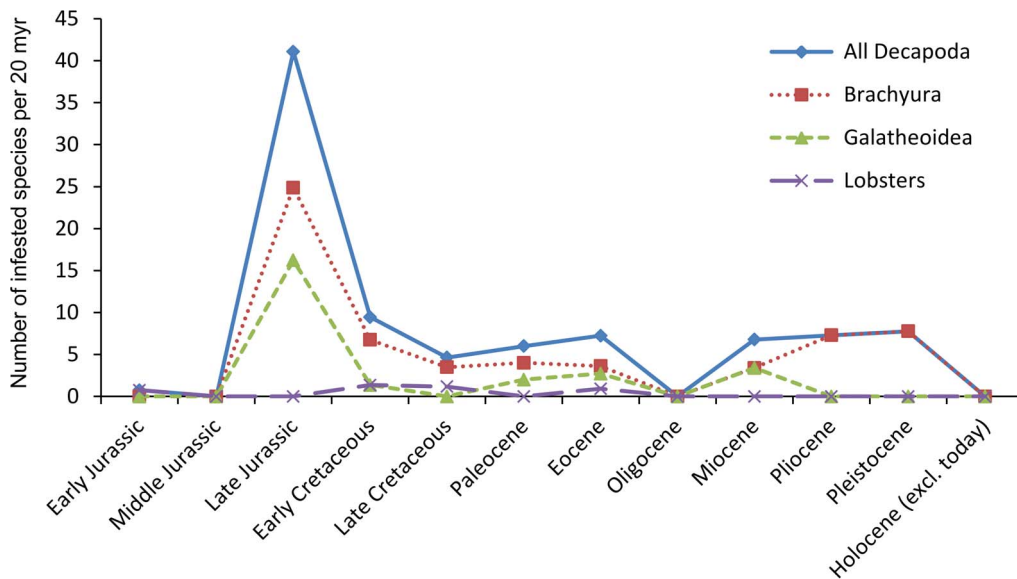
Another factor that could have suppressed the overall and per taxon infestation percentages here is the fact that part of the extant decapods have a final moulting phase, either when they reach maturity or during maturity (e.g., [58,59]). The majority of brachyurans appear to have determinate growth [58,59], whereas not much is known of the other frequently infested group, the galatheoids, except for *Cervimunida johni* [60], in which growth appears indeterminate [61]. When an isopod parasite infests the decapod after the final moulting phase or is not large enough to bulge the cuticle, then a swelling is unlikely to become visible on the branchial chamber of the carapace, although it should be noted that infestation by isopods was typically found in young individuals of the extant anomuran *P. granulosa* [12]. If decapods already experienced a final moulting phase in the late Albian, then the apparent infestation percentages are lower than in actuality, and, therefore, the percentages must be considered minimum estimates with respect to decapod size and the final moult. On the other hand, larger specimens may be able to get rid of parasitic isopods or outlive them as no isopod was found underneath the branchial swelling for some extant decapods [12,54,62]. If the swelling is not retained during the following moult phase, then no evidence exists of past infestation and the effect of potentially artificially increasing the infestation percentage would be limited.

A complicating factor in the fossil record is the mixture of moults and corpses in the sample, which cannot be distinguished in the case of Koskobilo [37]. Given that the growth rate of decapods can decrease due to infestation (e.g., [62,63]), fewer moults will likely be produced per time unit compared to uninfested, conspecific specimens. This may result in an underestimation of the true percentage of infestation on the taxon and ultimately on the assemblage level.

### Infestation through Time

Wienberg Rasmussen *et al.* [18] showed the number of affected species per family (which is, in part, a function of the number of taxa within a family) and they also indicated (p. 35) that the highest number of decapod species (not crab, contrary to their claim) infested originated from the Jurassic. Fewer affected species are known from the Cenozoic. The comparative paucity of swellings of Cenozoic age was already noted by Houša [15], and this observation has been substantiated by Robins *et al.* [19] and results presented herein, yet not by Ceccon & De Angeli [20]. This pattern is supported by quantitative data (Tables 2, 3) showing high infestation percentages in the Late Jurassic, even when corrected for the unequal duration of epochs (Fig. 5) and as percentages per epoch (Fig. 6). It is known from modern oceans that the distribution patterns of epicarideans are influenced by their intermediate (copepod) and their final hosts (always crustaceans; see [8]). It is likely that their distribution and diversity through time is influenced by their hosts as well. Several hypotheses can be put forward as to why there may be an apparent lower number of infested species and lower percentages of infestation in the Cenozoic and latest part of the Mesozoic:

**Adaptations increasing resistance.** Conway Morris [3] speculated that the post-Jurassic decline could have been caused by the evolution of adaptations with the goal of resisting infestation

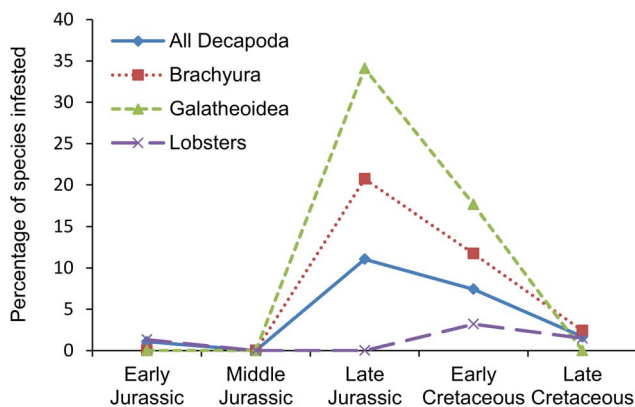


**Figure 5. The number of infested marine decapod, brachyuran, galatheoid anomuran, and lobster species standardised per 20 Myr per epoch.** Data primarily based on Wienberg Rasmussen *et al.* [18]; Schweitzer & Feldmann [75,124,125]; Schweitzer *et al.* [126]; Ceccon & De Angeli [20]; Robins *et al.* [19]; and herein. See Table 3 for additional references. Swellings have not been found in non-galatheoid anomurans and only one infested shrimp is known [182]. doi:10.1371/journal.pone.0092551.g005

in decapod crustaceans, but he also indicated that rigorous testing was called for. An important question is whether or not becoming resistant to infestation by isopods happened, and, if so, was controlled by evolutionary innovation. This may not have been the case, given the generally low incidence of infestation known from the fossil record (see introduction, Fig. 5) and the non-lethal consequences of infestation. As mentioned above, the intrinsic effectiveness of keeping the isopod larvae (and other fouling organisms) out of the gill chambers and the effectiveness of removing the isopods once infested may play a role in explaining variations in percentages of infestation in the Koskobilu fauna. This effectiveness may have changed through time as a function of changing decapod faunas that were able to keep fouling organisms out of their gill chambers more effectively. For example, Jurassic and Early Cretaceous brachyurans almost exclusively consist of primitive crabs (Podotremata), whereas more advanced crabs

(Eubrachyura) became progressively more abundant from the mid-Cretaceous onwards. A possible indication of the validity of the hypothesis that eubrachyurans are more effective in keeping isopod larvae out is to study infestation patterns in modern Podotremata and Eubrachyura from the same general area and habitat, and with a similar lifestyle.

**Diversity changes of commonly infested groups.** During the Late Jurassic and mid-Cretaceous, galatheoids were common in reef settings, both in terms of percentages of species amongst all decapods (Table 4) and in terms of specimens ([29,64], 483/1,078 = 45%). Galatheoid abundance and species richness in reefs appear to have decreased since that time (Table 4), unrelated to reef abundance (see [65,66]). Swellings are common in reef-associated Jurassic and mid-Cretaceous galatheoids (see [18,19], herein). Their declining contribution to reef faunas, from which most extinct galatheoids have been described, may in part explain why fewer swellings are found in the Cenozoic. Furthermore, Wienberg Rasmussen *et al.* [18] also listed a number of Tithonian goniodromitid crabs with swellings (their table 2). Even though goniodromitids are common in the Koskobilu fauna, only two specimens with a swelling have been noted to date (Table 1). This family had its acme in the Late Jurassic (when also several species were infested), experienced a possible re-diversification during the mid-Cretaceous, and disappeared during the Paleocene [34], which may have negatively influenced isopod infestation. The same could be suggested for Palaeocorystidae, a raninoid family that was most speciose in the mid-Cretaceous, but declined in species diversity towards the end of the Cretaceous; to date, no members of this family are known from the Cenozoic (see [48]). Wienberg Rasmussen *et al.* [18] showed that most infested species of this family are found in the mid-Cretaceous. The hypothesis that changing diversity of commonly infested groups could have affected infestation percentages through time is supported by the fact that a part of extant bopyrids seem host-specific as they infest a single decapod species [44,45], leaving them vulnerable when the decapod host goes extinct.



**Figure 6. The percentage of marine decapod, brachyuran, galatheoid anomuran, and lobster species infested per Jurassic and Cretaceous epoch.** doi:10.1371/journal.pone.0092551.g006



**Table 2.** The number of infested marine decapod, brachyuran, galatheid anomuran, lobster, and shrimp species per post-Triassic epoch.

Epoch	All Decapoda	Brachyura	Galatheid anomurans	Lobsters	Shrimps
Holocene (excl. today)					
Pleistocene	1	1			
Pliocene	1	1			
Miocene	6	3	3		
Oligocene					
Eocene	8	4	3	1	
Paleocene	3	2	1		
Late Cretaceous	8	6		2	
Early Cretaceous	22	15	3	3	1
Late Jurassic	38	23	15		
Middle Jurassic					
Early Jurassic	1			1	
<b>Total</b>	<b>88</b>	<b>55</b>	<b>25</b>	<b>7</b>	<b>1</b>

Data primarily based on Wienberg Rasmussen *et al.* [18]; Schweitzer & Feldmann [75,124,125]; Schweitzer *et al.* [126]; Ceccon & De Angeli [20]; Robins *et al.* [19]; and herein. See Table 3 for additional references. Swellings have not been found in non-galatheid anomurans.  
doi:10.1371/journal.pone.0092551.t002

**Copepods.** Pelagic calanoid copepods are the intermediate hosts of all known epicaridean isopods in the modern marine realm [8]. Unfortunately, only a handful of fossil copepods are known because of their small size and fragility [67]; these do not include calanoids. A hypothesis for the drop in infested species during the Cenozoic and latest part of the Cretaceous, in comparison to the Late Jurassic, may be a move of calanoid copepods to deeper waters. The larvae, following the intermediate copepod-phase (see [8]), could then also be found mostly in waters where sediments have a lower preservation potential than strata laid down at shallower depths. Bradford-Grieve [68] suggested that the related clausocalanoid copepods may have found refuge in benthic habitats in deeper waters after the mid-Cretaceous oxygen minimum, but that they could have reinvaded the entire water column during the Cenozoic. Alternatively, calanoid copepods may have become less abundant in Late Cretaceous, Paleogene and Neogene oceans. More fossil copepods need to be found in order to confirm or reject these speculative hypotheses.

**Changes in decapod size.** Preliminary data and personal observations suggest that the maximum size of decapods increased throughout geological time with Cenozoic and Late Cretaceous decapods being larger than their (earlier) Mesozoic counterparts [69]. If the median size of decapods also increased, then isopod parasites would be more difficult to observe in fossil decapod assemblages because it would take more time for the isopods to reach a size that would affect the cuticle of the branchial region for those decapods infested during adulthood. This would suppress the infestation percentages in fossil decapods. However, as noted above, infestation may primarily occur in small specimens of a species [12,62,70]. Along with a larger decapod size, decapod cuticle also becomes thicker as cuticle thickness increases with ontogeny (e.g., [71]) and may become possibly harder to deform (see [11]) during the intermoult periods when decapods may still grow slightly [58]. Additionally, it may also become more difficult to deform the developing cuticle during the moult phase. Such swellings in fossil decapods are usually smaller than ~10 mm (e.g., [18], herein). The largest swelling known to us is ~16 mm in length in the brachyuran *Lophoranina marestiana* ([160]) with a

carapace length of 35 mm as figured in Ceccon & De Angeli [20] (their pl. 2.1).

**Collecting bias.** Of note is that the majority of Jurassic species of infested decapod crustaceans is known from reef settings, in which relatively numerous decapod species (and specimens) can be found (e.g., [19,72–76]) in comparison to other environments (Recent, [77]; Cretaceous, [29]). Additionally, workers have been collecting in some these strata for a long time, which should have increased the likelihood of finding infested decapods with many species and specimens available. This may, at least in part, explain why many infested species are known from the Jurassic and why so many infested decapod species are reported from the Koskobilo quarry (33%). On the other hand, decapod diversity is known to have been anomalously high in the Late Jurassic compared to other time intervals during the Mesozoic [39,78,79], which is a direct function of the ubiquitous presence of reefs [39,79]. Thus, numerous species with swellings could be expected from the Late Jurassic. However, it should be noted that the coral-associated sediments of the type Maastrichtian in the Netherlands are also highly diverse, but not a single specimen with a swelling has been found after intensive collecting. Also, only one infested specimen is figured from the coral-associated, diverse decapod assemblage from the Paleocene (Danian) of Faxø in Denmark [18,179] (Table 4). Indeed, specimens with such swellings are extremely rare from these deposits (Sten Jakobsen, pers. comm. to AAK, February 2014). These results support the validity of the observed trend of lower infestation percentages since the Late Jurassic.

**Reporting bias.** Cenozoic swellings may simply have been under-recorded; however, they do appear to be uncommon primarily during this interval (RHBF, pers. obs.; Roger Portell, pers. comm. to AAK, February 2013).

#### Other Deformities on Decapods caused by Parasites

Another example of parasitic behaviour that affects the morphology of decapod crustaceans in the fossil record is the castration of the brachyuran *Tumidocarcinus giganteus* [80] from the Miocene of New Zealand. Feldmann [81] attributed this to rhizocephalan barnacles. Earlier, Bishop [82,83] had described

**Table 3.** All known fossil decapod crustacean species exhibiting a swelling in at least one specimen.

<b>Anomuran (A), brachyuran (B), lobster (L) or shrimp (S) family</b>	<b>Genus and species</b>	<b>Period and Epoch</b>	<b>Stage</b>	<b>Country of origin</b>	<b>Source used for data herein</b>
(A) Munidopsidae	<i>Ambulocapsa sentosa</i> [19]	Late Jurassic	Tithonian	Austria	[19]
(A) Munidopsidae	<i>Bullariscus triquetrus</i> [19]	Late Jurassic	Tithonian	Austria	[19]
(A) Munidopsidae	<i>Cracensigillatus acutirostrus</i> ([134])	Late Jurassic	Tithonian	Austria	[19]
(A) Munidopsidae	<i>C. gracilirostrus</i> [19]	Late Jurassic	Tithonian	Austria	[19]
(A) Munidopsidae	<i>C. prolatus</i> [19]	Late Jurassic	Tithonian	Austria	[19]
(A) Munidopsidae	<i>Culmenformosa glaessneri</i> [19]	Late Jurassic	Tithonian	Austria	[19]
(A) Munidopsidae	<i>Gastrosacus eminens</i> ([135])	Late Jurassic	Tithonian	Austria	[19]
(A) Munidopsidae	<i>G. ? latirostrus</i> ([136])	Late Jurassic	Oxfordian	France	[18]
(A) Munidopsidae	<i>G. meyeri</i> ([134])	Late Jurassic	Tithonian	Austria	[18]
(A) Munidopsidae	<i>G. tuberosiformus</i> ([137])	Late Jurassic	Tithonian	Austria	[19]
(A) Munidopsidae	<i>G. wetzleri</i> [138]	Late Jurassic	Kimmeridgian, Tithonian	Czech Republic, France, Germany,	[18]
(A) Galatheidae	<i>Eomunidopsis aldoirensis</i> [32]	Early Cretaceous	Albian	Spain	[32], herein
(A) Galatheidae	<i>E. navarrensensis</i> ([127])	Early Cretaceous	Albian	Spain	[32], herein
(A) Galatheidae	<i>E. neojurensis</i> [139] (= <i>Galathea antiqua</i> [134])	Late Jurassic	Tithonian	Austria, Czech Republic	[15,18]
(A) Galatheidae	<i>Galathea weinfurteri</i> [140]	Neogene, Miocene	Serravallian*	Hungary	[18]
(A) Galatheidae	<i>Galatheites zitteli</i> ([134])	Late Jurassic	Tithonian	Austria, Czech Republic	[18]
(A) Galatheidae	<i>Lessinigalatea regale</i> [141]	Paleogene, Eocene	Ypresian	Italy	[20]
(A) Galatheidae	<i>Mesogalatea striata</i> ([142])	Late Jurassic	Tithonian	Austria, Czech Republic	[18]
(A) Galatheidae	<i>Palaeomunida multicristata</i> [141]	Paleogene, Eocene	Priabonian	Italy	[20]
(A) Galatheidae	<i>Paragalathea ruizi</i> ([127])	Early Cretaceous	Albian	Spain	herein
(A) Galatheidae	<i>P. verrucosa</i> ([134])	Late Jurassic	Tithonian	Czech Republic	[18]
(A) Munididae	<i>Protomunida munidoidea</i> ([143])	Paleogene, Paleocene	Danian	Denmark	[18]
(A) Porcellanidae	<i>Lobipetrolistes blowi</i> [141]	Paleogene, Eocene	Priabonian	Italy	[20]
(A) Porcellanidae	<i>Petrolisthes magnus</i> [144]	Neogene, Miocene	Serravallian*	Hungary	[18]
(A) Porcellanidae	<i>Pisidia</i> cf. <i>P. kokayi</i> ([144])	Neogene, Miocene	Langhian*	Hungary	[18]
(B) Dromiidae	<i>Kromtitis</i> cf. <i>K. koberiformis</i> [145]	Paleogene, Eocene	Priabonian	Italy	[20]
(B) Dynomenidae	<i>Cyamocarcinus angustifrons</i> [146]	Paleogene, Eocene	Ypresian	Italy	[20]
(B) Dynomenidae	<i>Cylothyreus divaricatus</i> [75]	Late Jurassic	Tithonian	Austria	[75]
(B) Dynomenidae	<i>C. latus</i> ([134])	Late Jurassic	Tithonian	Czech Republic	[18]
(B) Dynomenidae	<i>C. quadrophthalmus</i> [75]	Late Jurassic	Tithonian	Austria	[75]
(B) Dynomenidae	<i>C. reussi</i> ([147])	Late Jurassic	Tithonian	Austria	[17,18]
(B) Dynomenidae	<i>C. strambergensis</i> [142]	Late Jurassic	Tithonian	Czech Republic	[17,18]
(B) Dynomenidae	<i>C. tithonius</i> ([147])	Late Jurassic	Tithonian	Italy	[17,18]
(B) Dynomenidae	<i>Graptocarcinus texanus</i> [130]	Early Cretaceous	Albian	Spain	herein
(B) Longodromitidae	<i>Abyssopthalmus mirus</i> ([134])	Late Jurassic	Kimmeridgian*	Germany	[18,72]
(B) Longodromitidae	<i>A. spinosus</i> ([24])	Late Jurassic	Oxfordian*	Germany	[17,18]
(B) Longodromitidae	<i>Longodromites excisus</i> ([26])	Late Jurassic	Oxfordian	Germany	[17,18]
(B) Longodromitidae	<i>L. ovalis</i> ([134])	Late Jurassic	Tithonian	Czech Republic	[17,18]
(B) Longodromitidae	<i>Planoprosopon heydeni</i> ([26])	Late Jurassic	Oxfordian	Poland	[18]
(B) Nodoprosopidae	<i>Nodoprosopon? katholickyi</i> ([142])	Late Jurassic	Tithonian	Czech Republic	[18]
(B) Nodoprosopidae	<i>N. ornatum</i> ([148])	Late Jurassic	Kimmeridgian*	Germany	[18,72]
(B) Gonioprosopidae	<i>Cycloprosopon complanatifforme</i> ([134])	Late Jurassic	Tithonian	Czech Republic	[18]
(B) Gonioprosopidae	<i>C. octonarium</i> [125]	Late Jurassic	Tithonian	Austria	[125]
(B) Gonioprosopidae	<i>Distefania renefraaijei</i> [34]	Early Cretaceous	Albian	Spain	[34], herein
(B) Gonioprosopidae	<i>D. oxythyreiformis</i> ([147])	Late Jurassic	Tithonian	Czech Republic	[18]

Table 3. Cont.

Anomuran (A), brachyuran (B), lobster (L) or shrimp (S) family	Genus and species	Period and Epoch	Stage	Country of origin	Source used for data herein
(B) Goniidromitidae	<i>Eodromites grandis</i> ([26])	Late Jurassic	–	Poland	[124,125]
(B) Goniidromitidae	<i>E. rostratus</i> ([25])	Late Jurassic	Oxfordian	Poland	[18]
(B) Goniidromitidae	<i>Goniidromites bidentatus</i> [149]	Late Jurassic	Tithonian	Czech Republic	[18]
(B) Goniidromitidae	<i>G. globosa</i> ([142])	Late Jurassic	Tithonian	Czech Republic	[18]
(B) Goniidromitidae	<i>G. laevis</i> ([127])	Early Cretaceous	Albian	Spain	herein
(B) Goniidromitidae	<i>G. polyodon</i> [149] (= <i>G. complanatus</i> [149])	Late Jurassic	Tithonian	Czech Republic	[17,18]
(B) Goniidromitidae	<i>Palaeodromites octodentatus</i> [150]	Early Cretaceous	Hauterivian	France	[18]
(B) Goniidromitidae	<i>Pithonoton marginatum</i> [24]	Late Jurassic	Oxfordian, Tithonian	Czech Republic, Poland	[18]
(B) Goniidromitidae	<i>Sabellidromites scarabaea</i> ([151])	Early Cretaceous	Albian	England	[124]
(B) Prosopidae	<i>Acareprosope bouvieri</i> ([133])	Early Cretaceous	Albian	Spain	herein
(B) Prosopidae	<i>Prosope aculeatum</i> [26]	Late Jurassic	?Tithonian*	Germany	[18]
(B) Homolidae	<i>Latheticocarcinus atlanticus</i> ([152])	Late Cretaceous	Campanian	USA	[18]
(B) Torynommidae	<i>Torynomma flemingi</i> [153]	Late Cretaceous	Maastrichtian*	New Zealand	[18]
(B) Torynommidae	<i>Withersella crepitans</i> [131]	Early Cretaceous	Aptian	England	[18]
(B) Homolodromiidae	<i>Notiodromia australis</i> ([154])	Late Cretaceous	Campanian*	Antarctica	[18]
(B) ?Macropipidae	<i>Faksecarcinus</i> (cf. <i>koskobilensis</i> ) ([28])	Early Cretaceous	Albian	Spain	herein
(B) Palaeocorystidae	<i>Cretacorantina testacea</i> ([155])	Late Cretaceous	Maastrichtian*	USA	[18]
(B) Palaeocorystidae	<i>Eucorystes carteri</i> ([156])	Early Cretaceous	Albian	England	[18]
(B) Palaeocorystidae	<i>Joeranina platys</i> ([157])	Late Cretaceous	Santonian	Canada	[126]
(B) Palaeocorystidae	<i>Notopocorystes stokesii</i> ([158])	Early Cretaceous	Albian	England, France	[18,48,159]
(B) Palaeocorystidae	<i>N. serotinus</i> [131]	Early Cretaceous	Albian	England	[18]
(B) Lyreididae	<i>Macroacaena rosenkrantzi</i> ([27])	Late Cretaceous	Maastrichtian	Greenland	[18]
(B) Raninidae	<i>Lophoranina marestiana</i> ([160])	Paleogene, Eocene	“middle”	Italy	[20]
(B) Raninidae	<i>Notosceles bournei</i> [161]	Paleogene, Paleocene	Danian*	USA	[18]
(B) Raninidae	<i>Quasilaeviranina ovalis</i> ([162])	Paleogene, Paleocene	Danian*	USA	[18]
(B) Feldmanniidae	<i>Caloxanthus paraornatus</i> [28]	Early Cretaceous	Albian	Spain	herein
(B) Feldmanniidae	<i>Feldmannia wintoni</i> ([162])	Early Cretaceous	Albian*	USA	[18]
(B) Aethridae	<i>Hepatus lineatinus</i> [163]	Neogene, Miocene	Serravallian-Tortonian*	Panama	[18]
(B) Necrocarcinidae	<i>Necrocarcinus labeschii</i> ([164])	Early Cretaceous	Albian	England	[18]
(B) Pilumnidae	<i>Galenopsis similis</i> [165]	Paleogene, Eocene	Ypresian	Italy	[20]
(B) Portunidae	<i>Charybdis</i> sp. [166]	Neogene, Pliocene	?Zanclean*	Japan	[18]
(B) Portunidae	<i>Portunus woodwardi</i> [167]	Neogene, Miocene	–	Brunei	[18]
(B) Leucosiidae	<i>Philyra granulosa</i> [167]	Neogene, Miocene	–	Brunei	[18]
(B) Leucosiidae	<i>P. syndactyla</i> [119]	Quaternary, Pleistocene	Middle*	Japan	[18]
(B) Viaiidae	<i>Viaia robusta</i> [35]	Early Cretaceous	Albian	Spain	[35], herein
(L) Mecochiridae	<i>Mecochirus rostratus</i> [27]	Late Cretaceous	Maastrichtian	Greenland	[18]
(L) Nephropidae	<i>Hoploparia dentata</i> ([168])	Early Cretaceous	Hauterivian	England	[18]
(L) Nephropidae	<i>H. gammaroides</i> [169]	Paleogene, Eocene	Ypresian*	England	[18]
(L) Nephropidae	<i>Hoploparia trigeri</i> ([170])	Late Cretaceous	Cenomanian	France	[18]
(L) Erymidae	<i>Eryma</i> sp. [118]	Early Jurassic	Toarcian	Indonesia	[18]
(L) Erymidae	<i>Palaeastacus? scaber</i> ([132])	Early Cretaceous	Albian	England	[18]
(L) Erymidae	<i>Pustulina? granulata</i> ([132])	Early Cretaceous	Albian	England	[18]
(S) Axiidae	<i>Axiopsis sampsonumae</i> [182]	Early Cretaceous	Albian	USA	[182]

\* = corrected or added compared to Wienberg Rasmussen *et al.* [18] for those with that source.  
doi:10.1371/journal.pone.0092551.t003

**Table 4.** Decapod and galatheid anomuran species richness and percentage of galatheids in Mesozoic and Cenozoic reef-associated faunas.

Localities	Formation	Age rock unit	Total decapod species	Galatheid species	Percentage galatheids	References used
Ernstbrunn quarries, Austria	Ernstbrunn Limestone	Upper Jurassic (Tithonian)	83	35	42.2	[19, 73–76, 124, 125, 171–177]
Koskobilo quarry, Spain	Eguino	mid-Cretaceous (Albian)	36	10	27.8	[29]
ENCI quarry, The Netherlands	Maastricht	Upper Cretaceous (Maastrichtian)	30	2	6.7	[29,178]
Faxe quarry, Denmark	Faxe	Lower Paleocene (Danian)	20	4	20.0	[179]
exposures of Szépvölgy Limestone Formation, Hungary	Szépvölgy Limestone	Upper Eocene (Priabonian)	58	9	15.5	[180]
sites in the Börzsöny- and Pilis Mountains, Hungary	–	mid-Miocene (Langhian)	19	1	5.3	[144]
localities near Budapest and Diósd, Hungary	–	mid-Miocene (Serravallian)	15	1	6.7	[144]
Depiru Beds, Malta	Upper Coralline Limestone	Upper Miocene (Messinian)	19	3	15.8	[181]

doi:10.1371/journal.pone.0092551.t004

sexually aberrant specimens of the Late Cretaceous brachyuran *Dakoticancer overanus* [84] from South Dakota (USA), which may or may not have been caused by parasitism [81]. Jones [85] suggested parasitism as the most likely cause for the existence of intersex specimens of *D. overanus*. Other parasite-induced deformities have been documented from extant crabs. For example, Miyashita [86] documented specimens of the extant brachyuran *Eriochelone japonica* ([87]) with slightly asymmetrical carapaces caused by an entoniscid isopod, while Shield & Kuris [88] noted that several regions of modern-day brachyurans (*Hemigrapsus* spp.) can be affected by entoniscid isopods as well. Similar examples may be expected from the fossil record.

## Systematic Ichnology

### Remarks

Bromley [89] was the first to make a formal distinction between borings in hard substrates, embedment cavities, burrows in soft substrates and other forms of destruction of hard substrates by bioerosion. He noted (p. 51) that, ‘The lodgment of a non-boring parasite in the calcareous skeleton of a host organism can cause great deformity of the skeletal material. The resulting cavity can be distinguished easily from a boring. Such cavities have been described by Voigt [90,91] in Cretaceous octocorals as the work of parasitic ascothoracican cirripeds.’ Further on in the same paper (p. 67) it reads, ‘As parasites, some ascothoracicans produce cavities in organic skeletons by causing deformation of the growth of the host. Voigt [90,91] has attributed deformity of this kind in Cretaceous octocorals to ascothoracican cirripeds but the cavities must be considered a result of embedment rather than of boring.’ Palmer & Wilson [92] coined the term ‘bioclaustration’ for the process by which a living skeletal-secreting organism overgrows a living counterpart. In a recent overview of the stratigraphy of marine bioerosion, this theme is covered anew [93], ‘Voigt [90,91] attributed cyst-like cavities, having a slit-like entrance, in Danian octocorals to the parasitism of ascothoracicans, naming the (unpreserved) animals *Endosacculus moltkiaie* [90] and *Endosacculus? najdini* [91]. These may be bioclaustration structures.’ Such gall-like ‘cysts’ generally have a drop- or keyhole-shaped entrance (see

[90,94]), which is lacking from the swellings described herein. At some point in time, larvae of isopods must have entered the anomuran, brachyuran, and lobster carapaces they infested (see f.e. [8]) through the branchial openings to attach to the gill filaments. This is not expected to have left any (bioerosional) signature on the decapod crustacean host; in short, only the swelling testifies to the former presence of such a settler symbiont (*sensu* [95]) of a bioclaustration (embedment) signature. Tapanila & Ekdale [95] recently clarified the ethological nomenclature of such structures, in noting that, ‘Extension of the bioclaustration cavity requires not only that the host skeleton continues to grow but also that the settler symbiont remains alive. ... The resulting trace fossil therefore preserves dual activities on the part of the embedded settler: interference of host growth, and maintenance of a dwelling structure. Trace fossils produced in this way belong to the ethologic category, impedichnia [96].’ Such isopod infestation is clearly an example of parasitism as it negatively affects the infested decapods: a lower fecundity or even castration may occur, secondary sex characters can be modified, distortion of the epipodites has been reported, and growth rate can be negatively affected (e.g., [8,11,54,62,70,97,98]). The ethologic category impedichnia could be used to describe this particular parasite-host interaction.

Recently, Bertling *et al.* [99] cast doubt on whether bioclaustration (embedment) structures should be called trace fossils as they referred to them as in the ‘grey zone’ and ‘non-traces’. Later on, Bertling *et al.* [99], however, also mentioned that ‘for convenience and in order to maintain stability of names with a high ecological meaning, we advocate nomenclaturally (not taxonomically) treating them as if they were ichnotaxa’ in referring to at least hybrid structures including bioclaustrations in which boring and overgrowth both are evident. Whether bioclaustrations should or should not be called trace fossils seems still under debate as several authors do refer to them as trace fossils (e.g., [95,100–104]).

Whether eventually considered true trace fossils or not, we here recognise that several criteria used by Bertling *et al.* [99] to consider bioclaustration structures as non-traces do not apply to the swellings described herein. Skeletal parts are moved in this case due to the presence of a growing isopod parasite pushing against

the cuticle (see [11], Christopher Boyko, pers. comm. to AAK, December 2013), which is probably a reason for stretching and/or obscuration of ornamentation in examples herein (Figs. 1A, 2E, 3A, 3M) and as shown in the literature on fossil decapods (e.g., [18]: pls 3.1, 3.3; [19]: fig. 16.12; [20]: pl. 1.1). The substrate is actively manipulated by the infesting isopod as Bursley [56] showed that the mandibles penetrated or bored into the inner decapod cuticle, probably the reason for a thickening of the cuticle locally. Bioimmuration (defined here as the overgrowing of dead organisms, as in Bertling *et al.* [99]) is generally not applicable in our case as a living isopod larva needs to get into the branchial chamber of a decapod first after which the juvenile epicaridean grows before such a swelling will develop, although the parasite may die within the branchial chamber. Such swellings typically are evidence for the presence of a living isopod parasite. Lastly, these swellings are very distinct and not a growth variation of unclear origin. As suggested by Bertling *et al.* [99], we treat these swellings (hybrid structures) at least nomenclaturally as ichnotaxa by erecting a new ichnogenus and -species to cover all of such traces.

Ichnogenus *Kanthyloma* nov. urn:lsid:zoobank.org:act:684-FA82A-9B4B-45C3-92E5-814C3874F203.

**Etymology.** Derived from the Greek *kantylē* meaning swelling or tumour. The gender is feminine.

**Type ichnospecies.** *Kanthyloma crusta* isp. nov.

**Diagnosis.** Subcircular to suboval swelling on a convex surface around a structure of biogenic origin not associated with any perforations, holes, or other irregularities.

**Remarks.** The works of Pickerill [105], Bertling [106], and Tapanila & Ekdale [95] were followed in identifying valid ichnotaxabases by focusing on the morphology of the structure primarily. Other examples of bioclastration expressed as swellings are known from the fossil record, but they differ from the new ichnogenus and have often not been described using Linnaean nomenclature. Two copepod-induced swellings in echinoids, referred to as the ichnotaxon *Castexia douvillei* [107] and the so-called ‘Halloween pumpkin-mask’ cysts, both of which are suggested to be treatable as trace fossils by Radwańska & Radwański [108], are different in that both bear numerous perforations in the swelling (e.g., [108]: figs. 5–7, [109]: figs. 4, 5). Halloween pumpkin-mask cysts are also known from fossil crinoid and modern hydrocoral stems ([108]: figs. 5.4, 8). Abdelhamid [110] reported on swellings on tests of Cretaceous echinoids from Egypt, but these swellings were associated with borings and were not named. A fossil echinoid spine bears an inferred copepod-induced swelling, but this swelling is irregular and no ichnotaxon was erected ([108]: fig. 9e). Fossil crinoid stems and arms have also been shown to contain swellings (e.g., [111–113]), but these swellings, linked to myzostomid annelid parasites, exhibit holes typically. The ichnofossil *Myzostomitus clarkei* [114] (= *Tremichnus cysticus* [115] *sensu* [108]) has been used for swellings containing pits in crinoid stems (see [115]: fig. 3). Roman [116] described similar swellings from Miocene echinoids. Swellings associated with elliptical and circular concavities caused by coral attachment to Devonian crinoid stems were discussed and described ichnotaxonomically [117].

*Kanthyloma crusta* isp. nov. (Figs. 2, 3) urn:lsid:zoobank.org:act:FA05E57B-57B0-4BF1-A6BF-17A8F285A528.

**Etymology.** Derived from the Latin *crusta* which translates as the hard outer shell.

**Type material and type locality.** The holotype (MGSB78340) is found in *Eomunidopsis navarrensis* (MGSB78339, Fig. 2C, D); paratypes (MAB k. 2601-i, 3008-i and 3177-i) occur in *Distefania renefraaijei* (MAB k. 2601, Fig. 3E, F), *Paragalathea ruizi* (MAB k. 3008, Fig. 2A, B), and *Caloxanthus paraornatus* (MAB k.

3177, Fig. 3G–I), respectively. All material originates from mid-Cretaceous (upper Lower Cretaceous, upper Albian) limestones of the Eguino Formation (Albeniz Unit) in northern Spain [29].

**Other material.** Swellings have also been recognised in the following specimens from the Koskobilo quarry: *Eomunidopsis navarrensis* (MAB k. 2644, 2794, 2602, 2603, 2924, 2982, 3007, 3191, 3015, 3020, 3302–3309, 3385, 3386), *Eomunidopsis aldoiransensis* (MAB k. 2530, 2981, 3190), *Paragalathea ruizi* (MAB k. 3189, 3310–3312), *Graptocarcinus texanus* (MAB k. 3174), *Faksecarcinus koskobiloensis* (MAB k. 3147, 3149), and *Viaia robusta* (MGSB78508).

Other fossil decapods exhibiting swellings that can also be ascribed to *Kanthyloma crusta* are found in Wienberg Rasmussen *et al.* [18] and references therein, Robins *et al.* [18], and Ceccon & De Angeli [20].

**Diagnosis.** Distinct, typically suboval swelling on convex surface around structure of biogenic origin, not associated with perforations, holes, or other irregularities. Height of swelling typically less than length and width. Orientation of long axis of suboval swelling typically subparallel or at low angle (<45°) to longitudinal axis of host skeleton.

**Description.** Distinct, typically suboval swelling on convex surface around structure of biogenic origin, not associated with perforations, holes, or other irregularities. Height of swelling typically less than length and width. Orientation of long axis of suboval swelling typically subparallel or at low angle (<45°) to longitudinal axis of host skeleton. Swelling not visible from every angle. Swellings do not overlap. Shell outlining swelling generally thin, on the order of millimetres when preserved.

**Stratigraphic range.** ?Toarcian–Pleistocene.

**Remarks.** As discussed above, *Kanthyloma crusta* is most likely induced by an isopod parasite. The swelling often increases the maximum width and height of the decapod carapace, whereas maximum carapace length usually is not influenced. The size of the swelling is a few mm up to approximately 16 mm in length [20] and is located in left or right branchial chambers, or both. The swelling may slightly distort ornament by stretching and/or removal of features and distinction between regions.

There is some doubt over the oldest stratigraphic occurrence of the new ichnospecies. Wienberg Rasmussen *et al.* [18] suggested that a swelling of this kind occurred in a specimen of the lobster *Eryma* from Indonesia, but this observation was based on a drawing in Soergel [118]; however, in the text (p. 623), Soergel did refer specifically to it. The youngest example to date from the fossil record is in *Phyllira syndactyla* [119] from the Pleistocene of Japan ([18]: pl. 3.10; based on [120]: pl. 1.4). Of note is that Kobayashi *et al.* [120] also showed a conspecific specimen in which both branchial sides appear to be swollen (their pl. 1.19). Holocene decapod fossils with such swellings are to be expected in the future, in view of their occurrence in Pleistocene and modern-day environments.

We are unaware of swellings in places other than the branchial chambers in fossil decapod crustaceans. This is known to be the spot of infestation used by extant members of the bopyrid subfamilies Pseudioninae, Bopyrinae, Argeiinae, Orbioninae and most Keponinae [8,9]. In modern oceans, some keponins (*Rhopalione* spp.) also infest under the abdomen of pinnotherid crabs, while female athelgines can be found on the dorsal abdomen of paguroids or king crabs [8,9]. Phylloporines are known from the ventral surface of abdomina of *Upogebia* (Gebiidea), while members of the Hemiarthrinae have been recorded from the ventral and dorsal abdominal surfaces, or from the lateral sides of carapaces or in the buccal regions of shrimps [8]. Two species within the cryptoniscoid family Entophilidae are endoparasitic, occurring in the visceral cavity of a galatheid and



in the abdomen of a gebiid mud shrimp, respectively [8,9]. This implies that fossil decapod crustaceans with swellings in other parts of exoskeleton may be found, although abdomina and venters of anomurans and shrimps are rarely represented in the fossil record. Records of isopod-induced swellings on appendages of extant decapods are unknown.

Swellings may also be recognised on well-preserved fossil barnacles. Hosie [121] showed that extant cryptoniscoid isopods are able to induce swellings on stalked cirripedes (his fig. 12A), while Recent cymothoid isopods cause swellings in fish [8]. Such traces are unlikely to fossilise, except under special circumstances. The same applies for isopods that infest non-decapod, softer-bodied crustaceans (see [8]).

## Conclusions

This work provides the first systematic study of isopod infestation for a fossil assemblage of decapod crustaceans. It appears that 4.1% of the brachyuran and anomuran specimens and 33% of the species show a swelling in the mid-Cretaceous (late Albian) fauna from Koskobilo in Spain. Anomurans are more heavily infested than brachyurans, especially the anomuran *Eomunidopsis navarrensis* with 12.1% of the specimens for species with at least 30 specimens. The positive correlation between the number of specimens and the infestation percentage on the species and genus level may suggest host-specificity, but more research is needed to confirm this. Infestation percentages of individual species and across species may have been influenced by a variety of biases including preferential breakage of swellings, differential preservation of taxa, size and final moult-related biases, and the mixture of moults and corpses in this assemblage.

Quantitative decapod infestation patterns through time based on data in the literature and the fauna discussed herein show that the highest number of infested species can be found in the Late Jurassic, also when corrected for the unequal duration of epochs. A peak in the Late Jurassic also shows based on the percentages of infested species per Jurassic and Cretaceous epoch, with Late Jurassic infestation percentages of 11% of all Decapoda, 20% of

Brachyura, and 34% of galatheid Anomura. This supports earlier claims based on much more limited data. The peak infestation in the Late Jurassic and the subsequent drop resulting in lower levels of infestation in the Cretaceous and Cenozoic may have been enhanced by a collecting and reporting bias, but more likely represent a biological signal caused by adaptations increasing resistance to infestation, drops in diversity of infestation-prone decapod groups, copepod (intermediate host)-related changes, and/or changes related to decapod size through time. This type of swellings is now accommodated in a new ichnogenus and -species, *Kanthylooma crusta*.

Much more research can be done to collect and document systematically infestation patterns in other decapod faunas to explain variability within and across genera and families better, refine the temporal trends, gain more insight into the evolutionary understanding of infestation patterns in modern decapods, and to address the various (taphonomic) biases inherent to the fossil record. Therefore, we would like to invite researchers to (continue to) study this phenomenon of infestation in detail.

## Acknowledgments

We thank the Cementos Portland Valderrivas Company (Olazti, Navarra) for their kind permission and hospitality to carry out fieldwork at the Koskobilo quarry; Thea Fraaije-van Boom, Carrie E. Schweitzer, Rodney M. Feldmann, and Yvonne Coole for participating during fieldwork; and Christopher Boyko, Stephen Donovan, Sten Jakobsen, Roger Portell, and Leif Tapanila for very useful information and suggestions. Comments of reviewers Gale Bishop, Christopher Boyko, Matúš Hyžný, and an anonymous reviewer substantially improved this manuscript. This is University of Florida Contribution to Paleobiology 656.

## Author Contributions

Conceived and designed the experiments: AAK PA BWMVB RHBFB JWMJ. Performed the experiments: AAK PA BWMVB RHBFB JWMJ. Analyzed the data: AAK PA BWMVB RHBFB JWMJ. Contributed reagents/materials/analysis tools: AAK PA BWMVB RHBFB JWMJ. Wrote the paper: AAK PA BWMVB RHBFB JWMJ. Commenting on the manuscript: AAK PA BWMVB RHBFB JWMJ.

## References

- Combes C (2004) Parasitism: the ecology and evolution of intimate interactions. Chicago: University of Chicago Press. 552 p.
- Poulin R, Morand S (2004) Parasite biodiversity. Washington DC: Smithsonian Books. 224 p.
- Conway Morris S (1981) Parasites and the fossil record. *Parasitology* 82: 489–503.
- Labandeira CC (2002) Paleobiology of predators, parasitoids, and parasites: Death and accommodation in the fossil record of continental invertebrates. *Paleontological Society Papers* 8: 211–250.
- Baumiller TK, Gahn FJ (2002) Fossil record of parasitism on marine invertebrates with special emphasis on the platyceratid-crinoid interaction. *Paleontological Society Papers* 8: 195–210.
- Boucot AJ, Poinar Jr GO (2011) Fossil behavior compendium. Boca Raton: CRC Press. 424 p.
- Schotte M, Boyko CB, Bruce NL, Poore GCB, Taiti S, et al. (2008 onwards) World list of marine freshwater and terrestrial isopod crustaceans. Available: <http://www.marinespecies.org/isopoda>. Accessed 5 February 2013.
- Williams JD, Boyko CB (2012) The global diversity of parasitic isopods associated with crustacean hosts (Isopoda: Bopyroidea and Cryptoniscoidea). *PLOS ONE* 7(4): e35350. doi:10.1371/journal.pone.0035350.
- Boyko CB, Moss J, Williams JD, Shields J (2013) A molecular phylogeny of Bopyroidea and Cryptoniscoidea (Crustacea: Isopoda). *System Biodivers* 11: 495–506.
- Boyko CB, Williams JD, Markham JC (2012) Recent and fossil Isopoda Bopyridae parasitic on squat lobsters and porcelain crabs (Crustacea: Anomura: Chirostyloidea and Galatheaidea), with notes on nomenclature and biogeography. *Zootaxa* 3150: 1–35.
- McDermott JJ (1991) Incidence and host-parasite relationship of *Leidyia bimini* (Crustacea, Isopoda, Bopyridae) in the brachyuran crab *Pachygrapsus transversus* from Bermuda. *Ophelia* 33: 71–95.
- Roccatagliata D, Lovrich GA (1999) Infestation of the false king crab *Paralomis granulosa* (Decapoda: Lithodidae) by *Pseudione tuberculata* (Isopoda: Bopyridae) in the Beagle Channel, Argentina. *J Crust Biol* 19: 720–729.
- Remeš M (1923) Excroissance des crustacés du Tithonique de Stramberk. *Bulletin de l'Académie internationale des Sciences de Bohême* 23: 36–37.
- Bachmayer F (1948) Pathogene Wucherungen bei jurassischen Dekapoden. *Sitzungsberichte der Österreichischen Akademie der Wissenschaften, mathematisch-naturwissenschaftliche Klasse* (1)57: 263–266.
- Houša V (1963) Parasites of Tithonian decapod crustaceans (Štramberk, Moravia). *Sborník Ústředního ústavu geologického* 28: 101–114.
- Radwański A (1972) Isopod-infected prosoponids from the Upper Jurassic of Poland. *Acta Geologica Polonica* 22: 499–506.
- Förster R (1969) Epökic, Entökic, Parasitismus und Regeneration bei fossilen Dekapoden. *Mitteilungen aus der Bayerischen Staatssammlung für Paläontologie und historische Geologie* 9: 45–59.
- Wienberg Rasmussen H, Jakobsen SL, Collins JSH (2008) Raninidae infested by parasitic Isopoda (Epicaridea). *Bulletin of the Mizunami Fossil Museum* 34: 31–49.
- Robins CM, Feldmann RM, Schweitzer CE (2013) Nine new genera and 24 new species of the Munidopsidae (Decapoda: Anomura: Galatheaidea) from the Jurassic Ernstbrunn Limestone of Austria, and notes on fossil munidopsid classification. *Ann Nat Hist Mus Wien* A115: 167–251.
- Ceccon L, De Angeli A (2013) Segnalazione di decapodi eocenici infestati da parassiti isopodi (Epicaridea) (Vicenza, Italia settentrionale). *Lavori Società Veneziana di Scienze Naturali* 38: 83–92.
- Shields JD, Kuris AM (1985) Ectopic infections of *Portunion conformis* (Isopoda: Entoniscoidea) in *Hemigrapsus* spp. *J Invertebr Pathol* 45: 122–124.
- Dana JD (1851) *Conspectus Crustaceorum quae in Orbis Terrarum circumnavigatione, Carolo Wilkes e Classe Reipublicae Foederatae Duce, lexit et descripsit*. *Proc Acad Nat Sci Philadelphia* 5: 247–254.

23. Bachmayer F (1955) Die fossilen Asseln aus den Oberjurassischen von Ernstbrunn in Niederösterreich und von Stramberg in Mähren. Sitzungsberichte der Österreichischen Akademie der Wissenschaften, mathematisch-naturwissenschaftliche Klasse (1)164: 255–273.
24. Meyer H von (1842) Über die in dem dichten Jurakalk von Aalen in Württemberg vorkommenden Spezies des Crustaceengenus *Prosopon*. Beiträge zur Petrefaktenkunde 5: 70–75.
25. Meyer H von (1840) Neue Gattungen fossiler Krebse aus Gebilden von bunten Sandsteinen bis in die Kreide. Stuttgart: Schweizerbart. 23 p.
26. Meyer H von (1857) Briefliche Mitteilungen. Jahrbuch für Mineralogie, Geologie, Geognosie und Petrefaktenkunde 1857: 556.
27. Collins JSH, Wienberg Rasmussen H (1992) Upper Cretaceous-Lower Tertiary decapod crustaceans from West Greenland. Bulletin fra Gronlands geologiske Undersøgelse 162: 1–46.
28. Klompmaker AA, Artal P, Van Bakel BWM, Fraaije RHB, Jagt JWM (2011) Etyid crabs (Crustacea, Decapoda) from mid-Cretaceous reefal strata of Navarra, northern Spain. Palaeontology 54: 1199–1212.
29. Klompmaker AA (2013) Extreme diversity of decapod crustaceans from the mid-Cretaceous (late Albian) of Spain: implications for Cretaceous decapod paleoecology. Cretaceous Research 41: 150–185.
30. Fraaije RHB, Van Bakel BWM, Jagt JWM, Klompmaker AA, Artal P (2009) A new hermit crab (Crustacea, Anomura, Paguroidea) from the mid-Cretaceous of Navarra, northern Spain. Boletín de la Sociedad Geológica Mexicana 61: 13–16.
31. Klompmaker AA, Artal P, Fraaije RHB, Jagt JWM (2011) Revision of the family Gastrodoridae (Crustacea, Decapoda), with description of the first species from the Cretaceous. J Paleontol 85: 226–233.
32. Klompmaker AA, Feldmann RM, Robins CM, Schweitzer CE (2012) Peak diversity of Cretaceous galatheid (Crustacea, Decapoda) from northern Spain. Cretaceous Research 36: 125–145.
33. Klompmaker AA, Artal P, Gulisano G (2011) The Cretaceous crab *Rathbunopon*: revision, a new species and new localities. Neues Jahrb Geol Palaont Abh 260: 191–202.
34. Klompmaker AA, Feldmann RM, Schweitzer CE (2012) A hotspot for Cretaceous goniodromitids (Decapoda, Brachyura) from reef associated strata in Spain. J Crust Biol 32: 780–801.
35. Artal P, Van Bakel BWM, Fraaije RHB, Jagt JWM, Klompmaker AA (2012) New Albian-Cenomanian crabs (Crustacea, Decapoda, Podotremata) from Monte Orobe, Navarra, northern Spain. Revista Mexicana de Ciencias Geológicas 29: 398–410.
36. Fraaije RHB, Klompmaker AA, Artal P (2012) New species, genera and a family of hermit crabs (Crustacea, Anomura, Paguroidea) from a mid-Cretaceous reef of Navarra, northern Spain. Neues Jahrb Geol und Palaont Abh 263: 85–92.
37. Klompmaker AA, Ortiz JD, Wells NA (2013) How to explain a decapod crustacean diversity hotspot in a mid-Cretaceous coral reef. Palaeogeogr Palaeoclimatol Palaeoecol 374: 256–273.
38. Fraaije RHB, Artal P, Van Bakel BWM, Jagt JWM, Klompmaker AA (2013) An array of sixth abdominal tergite types of paguroid anomurans (Crustacea) from the mid-Cretaceous of Navarra, northern Spain. In: Mulder EWA, Jagt JWM, Schulp AS, editors. The Sunday's child of Dutch earth sciences – a tribute to Bert Boekschoten on the occasion of his 80<sup>th</sup> birthday. Netherlands Journal of Geosciences 92: 109–117.
39. Klompmaker AA, Schweitzer CE, Feldmann RM, Kowalewski M (2013) The influence of reefs on the rise of Mesozoic marine crustaceans. Geology 41: 1179–1182.
40. Rayner GW (1935) The Falkland species of the crustacean genus *Munida*. Discovery Reports Cambridge 10: 209–245.
41. Fabricius JC (1793) Entomologia systematica emendata et aucta. Secundum classes, ordines, genera, species adjectis synonymis, locis; observationibus, descriptionibus. Hafniae [= Copenhagen]: Proft et Storch. 519 p.
42. Dana JD (1852) Crustacea. Part I. United States Exploring Expedition, during the years 1838, 1839, 1840, 1841, 1842, under the command of Charles Wilkes, U.S.N., 13, 1–685, with a folio atlas of 96 pls (published 1885).
43. Baba K, Macpherson E, Poore GC, Ah Yong ST, Bermudez A, et al. (2008) Catalogue of squat lobsters of the world (Crustacea: Decapoda: Anomura-families Chirostyliidae, Galatheididae and Kiwaidae). Zootaxa 1905: 1–220.
44. Boyko CB, Williams JD (2009) Crustacean parasites as phylogenetic indicators in decapod evolution. In: Martin JW, Crandall KA, Felder DL, editors. Decapod crustacean phylogenetics (Crustacean Issues 18). Boca Raton: CRC Press. 197–220.
45. Boyko CB, Williams JD (2011) Parasites and other symbionts of squat lobsters. In: Poore GCB, Ah Yong ST, Taylor J, editors. The biology of squat lobsters. Boca Raton: CRC Press. 271–295.
46. Zeldis JR (1985) Ecology of *Munida gregaria* (Decapoda, Anomura): Distribution and abundance, population dynamics and fisheries. Mar Ecol Prog Ser 22: 77–99.
47. Hyžný M (2011) *In situ* mud shrimps (Decapoda: Axiidea: Callinassidae) preserved within their burrows from the middle Miocene of the Central Paratethys. Bulletin of the Mizunami Fossil Museum 37: 37–46.
48. Van Bakel BWM, Guinot D, Artal P, Fraaije RHB, Jagt JWM (2012) A revision of the Palaeocorystoidea and the phylogeny of raninoidian crabs (Crustacea, Decapoda, Brachyura, Podotremata). Zootaxa 3215: 1–216.
49. Klompmaker AA, Fraaije RHB (2012) Animal behavior frozen in time: Gregarious behavior of Early Jurassic lobsters within an ammonoid body chamber. PLOS ONE 7(3): e31893. doi:10.1371/journal.pone.0031893.
50. Markham JC (1986) Evolution and zoogeography of the Isopoda Bopyridae, parasites of Crustacea Decapoda. In: Gore RH, Heck KL, editors. Crustacean Issues 4. Crustacean Biogeography. Rotterdam: A.A. Balkema. 143–164.
51. Bauer RT (1989) Decapod crustacean grooming: functional morphology, adaptive value, and phylogenetic significance. Crustacean issues 6: 49–73.
52. Bauer RT (1981) Grooming behavior and morphology in the decapod Crustacea. J Crust Biol 1: 153–173.
53. Stimpson W (1860) Notes on North American Crustacea, in the Museum of the Smithsonian Institution, No. II. Annals of the Lyceum of Natural History of New York 7: 177–246, pls 2, 5.
54. Van Wyk PM (1982) Inhibition of the growth and reproduction of the porcellanid crab *Pachycheles rudis* by the bopyrid isopod, *Aporobopyrus muguisensis*. Parasitology 85: 459–473.
55. Gibbs LR (1850) On the carcinological collections of the cabinets of natural history in the United States; with an enumeration of the species contained therein, and descriptions of new species. Proceedings of the American Association for the Advancement of Science 3: 165–201.
56. Bursey CR (1978) Histopathology of the parasitization of *Munida iris* (Decapoda: Galatheididae) by *Munidion irritans* (Isopoda: Bopyridae). Bull Mar Sci 28: 566–570.
57. Jacquinot H (1842–1847) In: Hombron JB, Jacquinot H, editors. Voyage au Pôle Sud et dans l'Océanie sur les corvettes "l'Astrolabe" et "La Zélée" pendant des années 1837–1838–1839–1840 sous le commandement de M. Dumont d'Urville, capitaine de vaisseau, publié par ordre du gouvernement et sous la direction supérieure de M. Jacquinot, Capitaine de Vaisseau, Commandant de "La Zélée". Zoologie, Atlas Crustacés, pls 1–9.
58. Hartnoll RG (1982) Growth. In: Abele LG, editor. The Biology of Crustacea, Volume 2. Embryology, Morphology, and Genetics. New York: Academic Press. 111–196.
59. Hartnoll RG (1985) Growth, sexual maturity and reproductive output. In: Wenner AM, editor. Factors in adult growth, Crustacean Issues 3. Rotterdam/Boston: Balkema. 101–128.
60. Porter CE (1903) Carcinología Chilena. Descripción de un nuevo galatéido. Revista Chilena de Historia Natural 7: 274–277.
61. Wolff M, Aroca T (1995) Population dynamics and fishery of the Chilean squat lobster *Cerimunida johni* porter (Decapoda, Galatheididae) off the coast of Coquimbo, northern Chile. Revista de Biología Marina, Valparaíso 30: 57–70.
62. González MT, Acuña E (2004) Infestation by *Pseudione humboldtensis* (Bopyridae) in the squat lobsters *Cerimunida johni* and *Pleuroncodes monodon* (Galatheididae) off northern Chile. J Crust Biol 24: 618–624.
63. Petrić M, Ferri J, Mladineo I (2010) Growth and reproduction of *Munida nullantii* (Decapoda: Anomura: Galatheididae) and impact of parasitism by *Pleurocrypta* sp. (Isopoda: Bopyridae) in the Adriatic Sea. J Mar Biol Assoc U.K. 90: 1395–1404.
64. Bachmayer F (1955) Die Crustaceenfauna der tithonischen Rifflkalke von Ernstbrunn und Stramberg. Paläontologische Zeitschrift 29: 5–6.
65. Kiessling W (2002) Secular variations in the Phanerozoic reef ecosystem. In: Kiessling W, Flügel E, Golonka J, editors. Phanerozoic reef patterns. Tulsa, Oklahoma: SEPM. SEPM Special Publication 72: 625–690.
66. Kiessling W (2009) Geologic and biologic controls on the evolution of reefs. Annu Rev Ecol Evol Syst 40: 173–192.
67. Selden PA, Huys R, Stephenson MH, Heward AP, Taylor PN (2010) Crustaceans from bitumen clast in Carboniferous glacial diamictite extend fossil record of copepods. Nat Commun 1: 50.
68. Bradford-Grieve JM (2002) Colonization of the pelagic realm by calanoid copepods. Hydrobiologia 485: 223–244.
69. Klompmaker AA, Kowalewski M, Schweitzer CE, Feldmann RM (2013) Evolutionary and environmental trends in body size of decapod crustaceans during the Mesozoic. Geological Society of America Abstracts with Programs 45 (7): 460.
70. O'Brien J, Van Wyk P (1985) Effects of crustacean parasitic castrators (epicaridean isopods and rhizocephalan barnacles) on growth of crustacean hosts. In: Wenner AM, editor. Factors in adult growth, Crustacean Issues 3. Rotterdam/Boston: Balkema. 191–218.
71. Waugh DA, Feldmann RM, Burrell JL, Hull AL, Hein K, et al. (2009) Ontogenetic variations in cuticle morphology in the blue crab *Callinectes sapidus* Rathbun, 1896. J Crust Biol 29: 141–156.
72. Wehner G (1988) Über die Prosoponiden (Crustacea, Decapoda) des Jura. PhD Thesis, Ludwig-Maximilians-Universität.
73. Schweitzer CE, Feldmann RM (2009) Revision of the Prosopinae *sensu* Glaessner, 1969 (Crustacea: Decapoda: Brachyura) including 4 new families and 4 new genera. Ann Nat Hist Mus Wien A110: 55–121.
74. Schweitzer CE, Feldmann RM (2009) Revision of *Gabriella* Collins et al., 2006 (Decapoda: Brachyura: Homolodromioidea: Tanidromitidae) with new Jurassic species. Neues Jahrb Geol Palaontol Abh 252: 1–16.
75. Schweitzer CE, Feldmann RM (2009) Revision of the genus *Cyclothyreus* Remeš, 1895 (Decapoda: Brachyura: Dromioidea). Neues Jahrb Geol Palaontol Abh 253: 357–372.
76. Schweitzer CE, Feldmann RM (2009) New species of Longodromitidae Schweitzer and Feldmann, 2009, from the Ernstbrunn Formation, Late Jurassic (Tithonian), Austria. Ann Nat Hist Mus Wien A111: 207–224.

77. Abele LG (1976) Comparative species composition and relative abundance of decapod crustaceans in marine habitats of Panama. *Marine Biology* 38: 263–278.
78. Sepkoski Jr JJ (2000) Crustacean biodiversity through the marine fossil record. *Contrib Zool* 69: 213–221.
79. Klompmaker AA (2012) Mesozoic decapod diversity with an emphasis on the Early Cretaceous (Albian) of Spain. PhD Thesis, Kent State University.
80. Glaessner MF (1960) The fossil decapod Crustacea of New Zealand and the evolution of the order Decapoda. New Zealand Geological Survey, Paleontological Bulletin 31: 3–63.
81. Feldmann RM (1998) Parasitic castration of the crab, *Tumidocarcinus giganteus* Glaessner, from the Miocene of New Zealand: coevolution within the Crustacea. *J Paleontol* 72: 493–498.
82. Bishop GA (1974) A sexually aberrant crab (*Dakoticaner overanus* Rathbun, 1917) from the Upper Cretaceous Pierre Shale of South Dakota. *Crustaceana* 26: 212–218.
83. Bishop GA (1983) A second sexually aberrant specimen of *Dakoticaner overanus* Rathbun, 1917, from the Upper Cretaceous *Dakoticaner* Assemblage, Pierre Shale, South Dakota (Decapoda, Brachyura). *Crustaceana* 44: 23–26.
84. Rathbun MJ (1917) New species of South Dakota Cretaceous crabs. *Contrib Zool* 67: 237–255.
85. Jones A (2013) Population Dynamics of *Dakoticaner overanus* from the Pierre Shale, South Dakota. MS Thesis, Kent State University.
86. Miyashita Y (1941) Observations on an entomiscid parasite of *Eriocheir japonicus* de Haan, *Entonionella fluvialis* n. g., n. sp. *Journal of Zoology* 9: 251–267.
87. De Haan F (1833–1850) Crustacea. In: Siebold PF von, editor. Fauna Japonica sive descriptio animalium, quae in itinere per Japoniam, jussu et auspiciis superiorum, qui summum in India Batava imperium tenent, suscepto, annis 1823–1830 collegit, notis, observationibus et adumbrationibus illustravit. Lugduni Batavorum [= Leiden]: J Müller et Co., i–xvii, i–xxxi, ix–xvi, 1–243.
88. Shields JD, Kuris AM (1985) Ectopic infections of *Portunus conformis* (Isopoda: Entoniscidae) in *Hemigrapsus* spp. *J Invertebr Pathol* 45: 122–124.
89. Bromley RG (1970) Borings as trace fossils and *Entobia cretacea* Portlock, as an example. In: Crimes TP, Harper JC, editors. Trace fossils. Liverpool: Seel House Press. 49–90.
90. Voigt E (1959) *Endosacculus moltkia* n. g. n. sp., ein vermutlicher fossiler Ascothoracide (Entomozoa) als Cystenbildner bei der Oktokoralle *Moltkia minuta*. *Paläontologische Zeitschrift* 33: 211–223.
91. Voigt E (1967) Ein vermutlicher fossiler Ascothoracide (*Endosacculus* (?) *najidni* n. sp.) als Bewohner einer kretazischen *Isis* aus der UdSSR. *Paläontologische Zeitschrift* 41: 86–90.
92. Palmer TJ, Wilson MA (1988) Parasitism of Ordovician bryozoans and the origin of pseudoborings. *Palaentology* 31: 939–949.
93. Bromley RG (2004) A stratigraphy of marine bioerosion. In: McIlroy D, editor. The application of ichnology to palaeoenvironmental and stratigraphic analysis. Geological Society, Special Publications 228: 455–479.
94. Jagt JWM, Müller W, Van Rijssel W, Van Rijssel E (2009) Opmerkelijke Luiks-Limburgse Krijtfossielen. Deel 12. Octokorallen met galachtige structuren. *Natuurhistorisch Maandblad* 98: 108–110.
95. Tapanila L, Ekdale AA (2007) Early history of symbiosis in living substrates: trace-fossil evidence from the marine record. In: Miller III W, editor. Trace fossils: concepts, problems, prospects. Amsterdam: Elsevier. 345–355.
96. Tapanila L (2005) Palaeoecology and diversity of endosymbionts in Palaeozoic marine invertebrates: trace fossil evidence. *Lethaia* 38: 89–99.
97. Hernáez P, Martínez-Guerrero B, Anker A, Wehrmann IS (2010) Fecundity and effects of bopyrid infestation on egg production in the Caribbean sponge-dwelling snapping shrimp *Synalpheus yano* (Decapoda: Alpheidae). *J Mar Biol Assoc U.K.* 90: 691–698.
98. Petrić M, Ferri J, Mladineo I (2010) Growth and reproduction of *Munida nultanti* (Decapoda: Anomura: Galatheididae) and impact of parasitism by *Pleurocrypta* sp. (Isopoda: Bopyridae) in the Adriatic Sea. *J Mar Biol Assoc U.K.* 90: 1395–1404.
99. Bertling M, Braddy SJ, Bromley RG, Demathieu GR, Genise J, et al. (2006) Names for trace fossils: a uniform approach. *Lethaia* 39: 265–286.
100. Bromley RG, Beuck L, Ruggiero ET (2008) Endolithic sponge versus terebratulid brachiopod, Pleistocene, Italy: accidental symbiosis, bioclastration and deformity. In: Wisshak M, Tapanila L, editors. Current developments in bioerosion. Berlin/Heidelberg: Springer. 361–368.
101. Tapanila L (2008) The endolithic guild: an ecological framework for residential cavities in hard substrates. In: Wisshak M, Tapanila L, editors. Current developments in bioerosion. Berlin/Heidelberg: Springer. 3–20.
102. McKinney FK (2009) Bryozoan-hyroid symbiosis and a new ichnogenus, *Caupokeras*. *Ichnos* 16: 193–201.
103. Knaust D (2012) Trace-fossil systematics. In: Knaust D, Bromley RG, editors. Trace Fossils as Indicators of Sedimentary Environments. Developments in Sedimentology 64: 79–101.
104. Cónsole-Gonella C, Marquillas RA (2013) Bioclastration trace fossils in epeiric shallow marine stromatolites: the Cretaceous-Palaeogene Yacoraite Formation, Northwestern Argentina. *Lethaia*, DOI: 10.1111/let.12043.
105. Pickerill RK (1994) Nomenclature and taxonomy of invertebrate trace fossils. In: Donovan SK, editor. The palaeobiology of trace fossils. Baltimore: Johns Hopkins. 3–42.
106. Bertling M (2007) What's in a name? Nomenclature, systematics, ichnotaxonomy. In: Miller III W, editor. Trace fossils: concepts, problems, prospects. Amsterdam: Elsevier. 81–91.
107. Mercier J (1936) Zoothylacies d'Échinide fossile provoquées par un Crustacé: *Castexia douvillei* nov. gen., nov. sp. *Bulletin de la Société Géologique de France*, sér, 5(6): 149–154.
108. Radwańska U, Radwański A (2005) Myzostomid and copepod infestation of Jurassic echinoderms: A general approach, some new occurrences, and/or re-interpretation of previous reports. *Acta Geologica Polonica* 55: 109–130.
109. Radwańska U, Poirot E (2010) Copepod-infested Bathonian (Middle Jurassic) echinoderms from northern France. *Acta Geologica Polonica* 60: 549–555.
110. Abdelhamid MAM (1999) Parasitism, abnormal growth and predation on Cretaceous echinoderms from Egypt. *Revue de Paléobiologie* 18: 69–83.
111. Graff L von (1885) Ueber einige Deformitäten an fossilen Crinoiden. *Palaentographica* 31: 183–191.
112. Welch JR (1976) Phosphannulus on Palaeozoic crinoid stems. *J Paleontol* 50: 218–225.
113. Hess H (2010) Myzostome deformation on arms of the Early Jurassic crinoid *Balanocrinus gracilis* (Charlesworth). *J Paleontol* 84: 1031–1034.
114. Howell BF (1962) Worms. In: Moore RC, editor. Treatise on Invertebrate Paleontology, Pt. W, Miscellaneous: Conodonts, conoidal shells of uncertain affinities, worms, trace fossils and problematica. Boulder, Colorado: Geological Society of America; Lawrence, Kansas: University of Kansas. F144–F177.
115. Brett CE (1985) *Tremichnus*: a new ichnogenus of circular-parabolic pits in fossil echinoderms. *J Paleontol* 59: 625–635.
116. Roman J (1952) Quelques anomalies chez *Clypeaster melitensis* Michelin. *Bulletin de la Société Géologique de France*, sér, 6(2): 3–11.
117. Bohatý J, Ausich WI, Nardin E, Nyhuis C, Schröder S (2012) Coral-crinoid bioencrustation and resulting trace fossils from the Middle Devonian of the Eifel Synclines (Rhenish Massif, Germany). *J Paleontol* 86: 282–301.
118. Soergel W (1913) Lias und Dogger von Jelbie und Dogger (Misolarchipel) [Geologische Mitteilungen aus dem Indo-Australischen Archipel, 9]. *Neues Jahrbuch für Mineralogie, Geologie und Paläontologie, Beilage-Band* 36: 586–650.
119. Ortmann AE (1892) Die Decapoden-Krebse des Strassburger Museums, mit besonderer Berücksichtigung der von Herrn Dr. Döderlein bei Japan und bei den Liu-Kiu-Inseln gesammelten und zur Zeit im Strassburger Museum aufbewahrten Formen. V. Theil. Die Abtheilungen Hippidea, Dromidea und Oxystomata. *Zoologische Jahrbücher, Abteilung für Systematik, Geographie und Biologie der Thiere* 6: 532–588.
120. Kobayashi N, Goda T, Ohira N, Karasawa H (2008) New records of crabs and barnacles (Crustacea: Decapoda and Cirripedia) from the middle Pleistocene Atsumi Group of Aichi Prefecture, Japan. *Bulletin of the Mizunami Fossil Museum* 34: 111–115.
121. Christie AM (2008) Four new species and a new record of Cryptoniscoidea (Crustacea: Isopoda: Hemioniscidae and Crinoniscidae) parasitizing stalked barnacles from New Zealand. *Zootaxa* 1795: 1–28.
122. Ward M (1942) Notes on the Crustacea of the Desjardins Museum, Mauritius Institute, with descriptions of new genera and species. *The Mauritius Institute Bulletin* 2(2): 49–108, pls 5–6.
123. Alcock A (1895) Materials for a carcinological fauna of India. No. 1. The Brachyura Oxyrhyncha. *Journal of the Asiatic Society of Bengal* 64: 157–291, pls III–V.
124. Schweitzer CE, Feldmann RM (2008) [imprint 2007] A new classification for some Jurassic Brachyura (Crustacea: Decapoda: Brachyura: Homolodromioidea): families Goniodromitidae Beurlen, 1932 and Tanidromitidae new family. *Senckenbergiana Lethaia* 87: 119–156.
125. Schweitzer CE, Feldmann RM (2010) Revision of *Cycloprosopon* and additional notes on *Eodromites* (Brachyura: Homolodromioidea: Goniodromitidae). *Ann Nat Hist Mus Wien* A112: 169–194.
126. Schweitzer CE, Feldmann RM, Cosovic V, Ross RL, Waugh DA (2009) New Cretaceous and Eocene Decapoda (Astacidea, Thalassinidea, Brachyura) from British Columbia, Canada. *Annals of Carnegie Museum* 77: 403–423.
127. Van Straelen V (1940) Crustacés décapodes nouveaux du Crétacé de la Navarre. *Bulletin du Musée royal d'Histoire naturelle de Belgique* 16: 1–5.
128. Ruiz de Gaona M (1943) Nota sobre crustáceos decápodos de la cantera del Monte Orobe (Alsasua). *Boletín de la Real Sociedad Española de Historia Natural* 40: 425–433.
129. Via Boada L (1981) Les crustacés décapodes du Cénomanién de Navarre (Espagne): premiers résultats de l'étude des *Galatheidae* [sic]. *Géobios* 14: 247–251.
130. Roemer FA (1887) *Graptocarcinus texanus*, ein Brachyure aus der Kreide von Texas. *Neues Jahrbuch für Mineralogie, Geologie, und Paläontologie* 1887: 173–176.
131. Wright CW, Collins JSH (1972) British Cretaceous crabs. *Palaentographica Society Monographs* 126(533): 1–113.
132. Bell T (1863) A monograph of the fossil malacostracous Crustacea of Great Britain, Pt. II, Crustacea of the Gault and Greensand. *Palaentographica Society Monograph*, London: 1–40, 11 pls.
133. Van Straelen V (1944) Anomoure et brachyours du Cénomanién de la Navarre. *Bulletin du Musée Royal d'Histoire naturelle de Belgique* 20: 1–12.
134. Moericke W (1889) Die Crustaceen der Stramberger Schichten. *Palaentographica, Suppl.* 2 (6): 43–72, pl. 6.

135. Blaschke F (1911) Zur Tithonfauna von Stramberg in Mähren. *Annalen des Kaiserlich-Königlichen Naturhistorischen Museums in Wien* 25: 143–222.
136. Beurlen K (1929) Untersuchungen über Prosoponiden. *Centralblatt für Mineralogie, Geologie, und Paläontologie (B, Geologie und Paläontologie)* 1929: 125–142.
137. Lörenthey E, Beurlen K (1929) Die fossilen Decapoden der Länder der Ungarischen Krone. *Geologica Hungarica (Palaeontologica)* 3: 1–421, 12 tables, 16 pls.
138. Meyer H von (1851) Briefliche Mittheilungen. *Neues Jahrbuch für Mineralogie, Geologie, Geognosie und Petrefaktenkunde* 1851: 677.
139. Patruilus D (1959) Contributions à la systématique des Décapodes néojurassiques. *Revue de Géologie et Géographie* 3: 249–257.
140. Bachmayer F (1950) Neue Dekapoden aus dem österreichischen Tertiär. *Ann Nat Hist Mus Wien* 57: 133–140, pl. 1.
141. De Angeli A, Garassino A (2002) Galatheid, chirostylid and porcellanid decapods (Crustacea, Decapoda, Anomura) from the Eocene and Oligocene of Vicenza (N Italy). *Memorie della Società Italiana di Scienze Naturali e del Museo Civico di Storia naturale di Milano* 30: 1–40.
142. Remeš M (1895) Beiträge zur Kenntnis der Crustaceen der Stramberger Schichten. *Bulletin International de l'Académie des Sciences de Bohême* 2: 200–204, pls. 1–3.
143. Segerberg KO (1900) De Anomura och Brachyura dekapoderna inom Skandinavien Yngre krita. *Geologiska Föreningens i Stockholm Förhandlingar* 22: 347–388, pls. 7–9.
144. Müller P (1984) Decapod Crustacea of the Badenian. *Geologica Hungarica, Series Palaeontologica* 42: 3–317.
145. Beschin C, Busulini A, De Angeli A, Tessier G (2007) I Decapodi dell'Eocene Inferiore di Contrada Geccholina (Vicenza – Italia settentrionale) (Anomura e Brachiura). *Museo di Archeologia e Scienze Naturali “G. Zannato”, Montecchio Maggiore (Vicenza)* 2007: 9–76.
146. Bittner A (1883) Neue Beiträge zur Kenntnis der Brachyuren-Fauna des Alttertiärs von Vicenza und Verona. *Denkschriften der Kaiserlichen Akademie der Wissenschaften, (Mathematisch-naturwissenschaftliche Klasse)* 46: 299–316, pl. 1.
147. Gemellaro GG (1869) Studi paleontologici sulla fauna del calcare à *Terebratula janitor* del Nord di Sicilia 1: 11–18, pls. 2, 3.
148. Meyer H von (1860) Die Prosoponiden oder die Familie der Maskenkrebse. *Palaeontographica* 7: 183–222, pl. 23.
149. Reuss AE (1858 [imprint 1857]) Über kurzschwänzige Krebse im Jurakalke Mährens. *Sitzungsberichte der Kaiserlichen Akademie der Wissenschaften (Mathematisch-naturwissenschaftliche Classe)* 31: 5–13.
150. Milne-Edwards A (1865) Note sur deux nouveaux Crustacés fossiles du terrain néocomien du Département de l'Yonne. *Bulletin de la Société des Sciences Historiques et Naturelles de l'Yonne* 19: 341–347, pl. 5.
151. Wright CW, Wright EV (1950) Some dromiacean crabs from the English Cretaceous. *Proc Geol Assoc* 61: 13–27, pl. 1.
152. Roberts HB (1962) The Upper Cretaceous decapod crustaceans of New Jersey and Delaware. In: Richards HG, editor. *The Cretaceous fossils of New Jersey*. Bulletin of the New Jersey Division of Geology 61: 163–192.
153. Glaessner MF (1980) New Cretaceous and Tertiary crabs (Crustacea: Brachyura) from Australia and New Zealand. *Trans R Soc S Aust* 104: 171–192.
154. Feldmann RM, Tshudy DM, Thomson MRA (1993) Late Cretaceous and Paleocene decapod crustaceans from James Ross Basin, Antarctic Peninsula. *The Paleontological Society Memoir* 28: i–iv, 1–41.
155. Rathbun MJ (1926) Crustacea. In: Wade B, editor. *The fauna of the Ripley Formation of Coon Creek, Tennessee*. U.S. Geological Survey Professional Paper 137: 184–191, pls. 63–70.
156. McCoy F (1854) On some new Cretaceous Crustacea. *The Annals and Magazine of Natural History* (2) 44: 116–122.
157. Schweitzer CE, Feldmann RM (2001) New Cretaceous and Tertiary decapod crustaceans from western North America. *Bulletin of the Mizunami Fossil Museum* 28: 173–210.
158. Mantell GA (1844) Medals of creation 1–2: 1–1016, 6 pls. Bohn HG, London.
159. Breton G (2010) Crustacés in Colleté C. (coord.), *Stratotype Albien*. Muséum national d'Histoire naturelle, Paris; Biotopé, Méze; BRGM, Orléans, 332 p.+ CD-Rom (Patrimoine géologique; 2): [ouvrage imprimé: 221–223, fig. 149–155; CD-Rom: 3–31, fig. 1–7].
160. König C (1825) *Icones fossilium sectiles*: 1–4, 19 pls. Sowerby GB, London.
161. Rathbun MJ (1928) Two new crabs from the Eocene of Texas. *Proceedings of the United States National Museum* 73: 1–6, pls. 1–3.
162. Rathbun MJ (1935) Fossil Crustacea of the Atlantic and Gulf Coastal Plain. *Geological Society of America, (special paper)* 2: i–viii, 1–160.
163. Todd JA, Collins JSH (2005) Neogene and Quaternary crabs (Crustacea, Decapoda) collected from Costa Rica and Panama by members of the Panama Paleontology Project. *Bulletin of the Mizunami Fossil Museum* 32: 53–85, pls. 1–4.
164. Eudes-Deslongchamps JA (1835) Mémoire pour servir à l'histoire naturelle des Crustacés fossils. *Mémoire de la Société Linnéenne de Normandie* 5: 37–46, pl. 1.
165. Bittner A (1875) Die Brachyuren des vicentinischen Tertiärgebirges. *Denkschriften der Kaiserlichen Akademie der Wissenschaften, (Mathematisch naturwissenschaftliche Klasse)* 34: 63–105, pls. 1–5.
166. Karasawa H, Nobuhara T (2008) Decapoda and Isopoda (Crustacea) from the Pliocene Shimajiri Group in the Miyako-jima Island, Ryukyus, Japan. *Bulletin of the Mizunami Fossil Museum* 34: 23–30.
167. Morris SF, Collins JSH (1991) Neogene crabs from Brunei, Sabah and Sarawak. *Bulletin of the British Museum (Natural History), (Geology)* 47 (1): 1–33.
168. Roemer FA (1841) Die Versteinerungen des norddeutschen Kreidegebirges. Hannover.
169. Bell T (1858) A monograph of the fossil malacostracous Crustacea of Great Britain, Pt. I, Crustacea of the London Clay. *Monograph of the Palaeontographical Society, London*, 10 [1856]: i–viii, 1–44, 11 pls.
170. Milne-Edwards A (1886) In: Guiliier A. *Géologie du Département de la Sarthe*. Paris et Les Mans.
171. Bachmayer F (1945) Die Crustaceen aus dem Ernstbrunner Kalk der Jura-Klippenzone zwischen Donau und Thaya. *Jahrbuch der Geologischen Bundesanstalt Wien* 1945: 35–43.
172. Schweitzer CE, Feldmann RM (2008) Revision of the genus *Laeviprosopon* Glaessner, 1933 (Decapoda: Brachyura: Homolodromioidea: Prosopidae) including two new species. *Neues Jahrb Geol Palaontol Abh* 250: 273–285.
173. Schweitzer CE, Feldmann RM (2010) A new family of Mesozoic Brachyura (Glaessneropsoidea) and reevaluation of *Distefania* Checchia-Rispoli, 1917 (Homolodromioidea: Goniodromitidae). *Neues Jahrb Geol Palaontol Abh* 256: 363–380.
174. Schweitzer CE, Feldmann RM (2010) The genus *Coelopus* Étallon, 1861 (Brachyura: Glaessneropsoidea: Longodromitidae) with new species. *Neues Jahrb Geol Palaontol Abh* 258: 51–60.
175. Schweitzer CE, Feldmann RM (2010) Earliest known Porcellanidae (Decapoda: Anomura: Galatheaidea) (Jurassic: Tithonian). *Neues Jahrb Geol Palaontol Abh* 258: 243–248.
176. Feldmann RM, Schweitzer CE (2009) Revision of Jurassic Homoloidea De Haan, 1839, from the Ernstbrunn and Štramberg limestones, Austria and the Czech Republic. *Ann Nat Hist Mus Wien* A111: 183–206.
177. Robins CM, Feldmann RM, Schweitzer CE (2012) The oldest Munididae (Decapoda: Anomura: Galatheaidea) from Ernstbrunn, Austria (Tithonian). *Ann Nat Hist Mus Wien* A114: 289–300.
178. Collins JSH, Fraaye RHB, Jagt JWM (1995) Late Cretaceous anomurans and brachyurans from the Maastrichtian type area. *Acta Palaontol Pol* 40: 165–210.
179. Jakobsen SL, Collins JSH (1997) New middle Danian species of anomurans and brachyuran crabs from Fakse, Denmark. *Bulletin of the Geological Society of Denmark* 44: 89–100.
180. Müller P, Collins JSH (1991) Late Eocene coral-associated decapods (Crustacea) from Hungary. *Contributions to Tertiary and Quaternary Geology* 28: 47–92.
181. Gatt M, De Angeli A (2010) A new coral-associated decapod assemblage from the Upper Miocene (Messinian) Upper Coralline Limestone of Malta (central Mediterranean). *Palaeontology* 53: 1315–1348.
182. Franțescu OD (2014) Fossil mudshrimps (Decapoda: Axiidea) from the Pawpaw Formation (Cretaceous: Albian), northeast Texas, USA. *Bulletin of the Mizunami Fossil Museum* 40: 13–22.