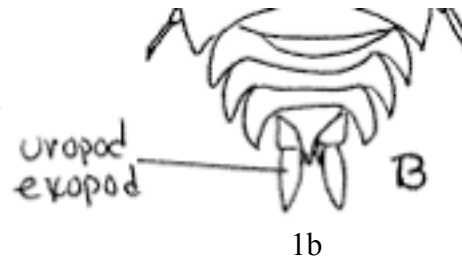
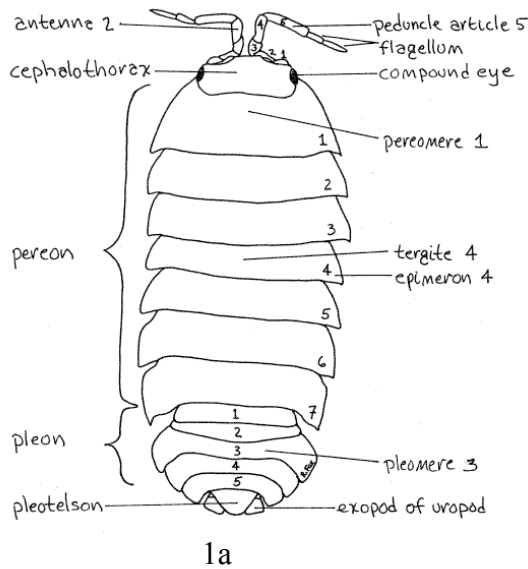


This is a key to the terrestrial isopods that are common in this area. Some less common species are not included, so if you have something that doesn't seem to match any of these species, it might be something else.

To use the key, decide which statement applies and then go to the next pair of statements. For example, if statement 1a fits your isopod, you go to pair 2; if statement 1b fits your isopod, go to pair 4.

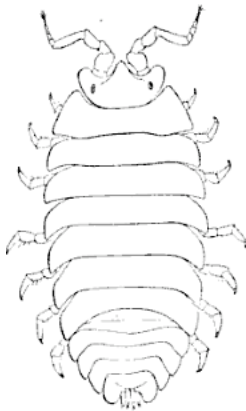
1a. Uropods are broad and even with the back end of the isopod.....2

1b. Uropods are narrow and extend past the back end of the isopod.....4



2a. Head does not have a pointy lobe in the middle; adults are about 10 mm long; can roll into a ball....3

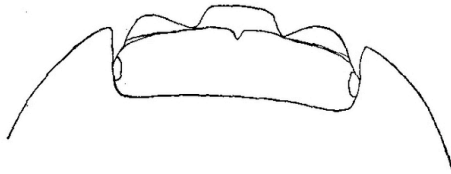
2b. Head has a pointy lobe in the middle; adults are small, about 4 mm long; can roll into a ball.....*Armadilloniscus ellipticus*



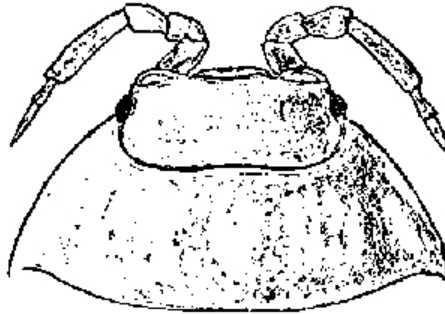
Armadilloniscus ellipticus

3a. Head has a small notch and a square projection between the antennae...*Armadillidium nasatum*

3b. Head does not have a small notch or square projection...*Armadillidium vulgare*



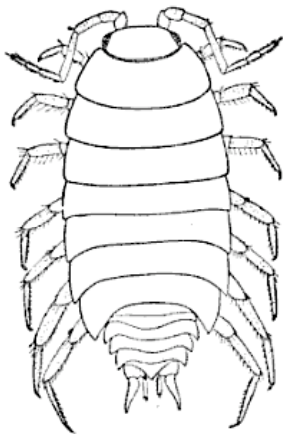
Armadillidium nasatum, head



Armadillidium vulgare, head

4a. Edge of abdomen is abruptly narrower than edge of thorax.....10

4b. Edge of abdomen is even with edge of thorax.....5



4a



4b

5a. Surface is smooth6

5b. Surface is covered in bumps (tubercles).....8

6a. Flagellum of antenna has two segments; rear margin of first pereomere nearly straight...7

6b. Flagellum of antenna has three segments (articles); rear margin of first body segment (pereomere) hook-shaped.....*Oniscus asellus*



Oniscus asellus

7a. Has five pairs of white lungs (pseudotracheae) on underside; can roll into a ball.....
Cylisticus convexus

7b. Has two pairs of white pseudotracheae on underside; doesn't roll into a ball.....*Porcellio laevis*



Ljós. Erling Ólafsson

Cylisticus convexus



Porcellio laevis

8a. Has five pairs of white lungs (pseudotracheae) on underside.....*Trachelipus rathkei*

8b. Has two pairs of pseudotracheae...9



Trachelipus rathkei



Porcellio sp.

9a. Mottled light brown with row of white spots on side and dark head; middle of head is rounded....*Porcellio spinicornis*

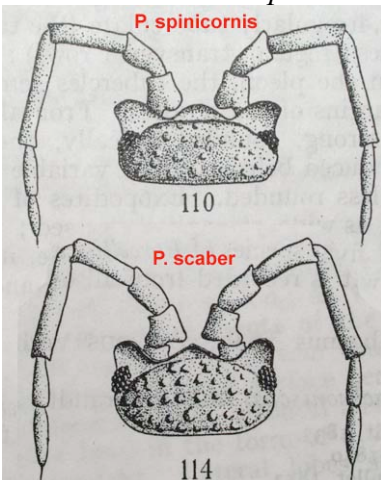
9b. Usually uniform in color, usually gray, head not darker than rest of body; middle of head is pointed.....*Porcellio scaber*



Porcellio spinicornis



Porcellio scaber



10a. Flagellum of antenna has three articles; mottled or striped, usually with darker head....11

10b. Flagellum of antenna has two articles; uniform in color, gray or brown or purplish; may appear dusty; white bands on antennae.....*Porcellionides pruinosus*

10c. Flagellum of antenna has ten or more articles; mottled or striped...*Ligidium hypnorum*



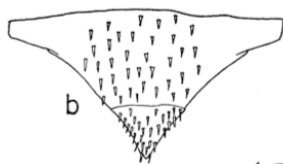
Porcellionides pruinosus



Ligidium hypnorum

11a. Telson rounded....*Littorophiloscia vittata*

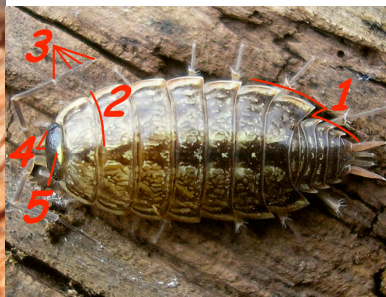
11b. Telson pointed....*Philoscia muscorum*



telson of *Littorophiloscia vittata* (a) and *Philoscia muscorum* (b)



Littorophiloscia vittata



Philoscia muscorum